

Conveyor system F85

F45

FT

FS

FL

FLP

F65

FM

FMP

F85

F85P

FH

FK

FKP

FB140

FB175

FB295

SPIRAL

FW

FLX

FMX

FHX

FBX175

FBX295

ACC

CA

FC

TOOL

IDX

Contents

Chains 3

Conveyor beam 6

End drive units 9

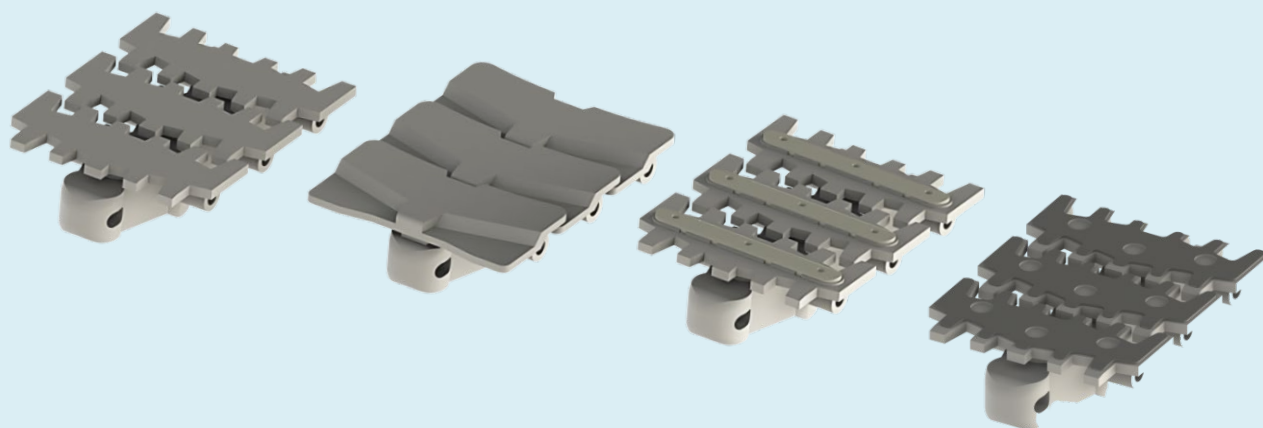
Idler end unit 10

Horizontal wheel bends 12

Horizontal plain bends 14

Vertical bends 16

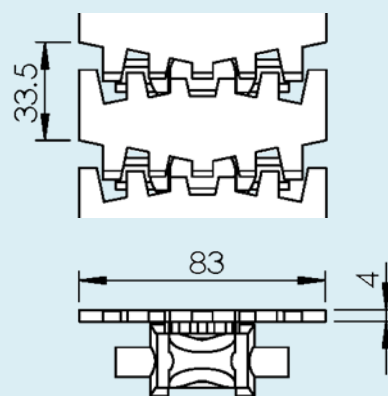
Chains



Plain chain

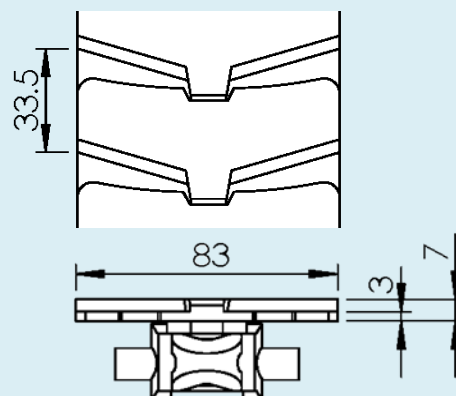
FBTP 5A85 Plain chain
Length 5 m

F5059652 Plain link



FBTP 5A85A Closed top chain
Length 5 m

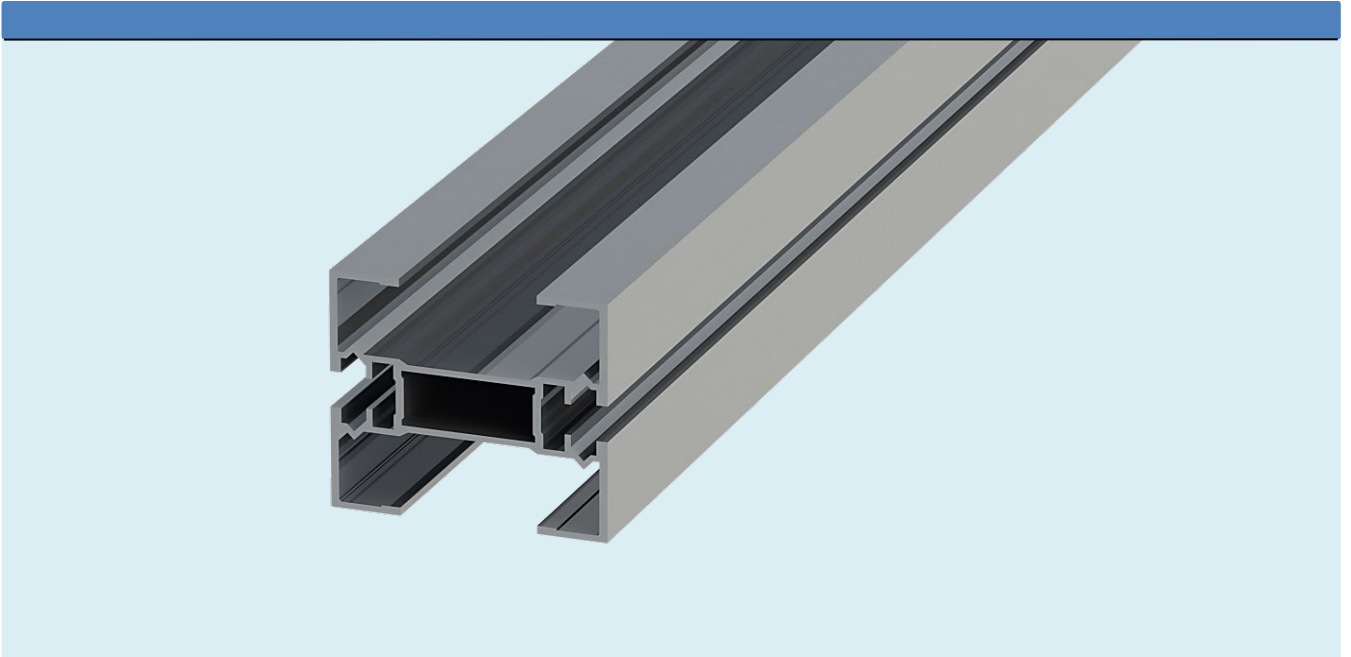
F5059685 Closed top link



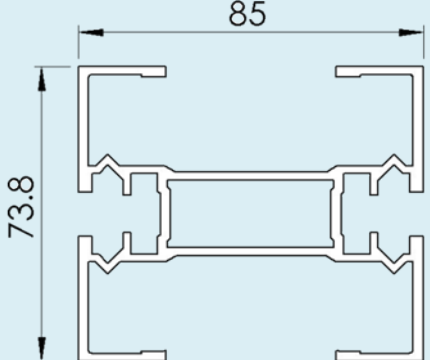
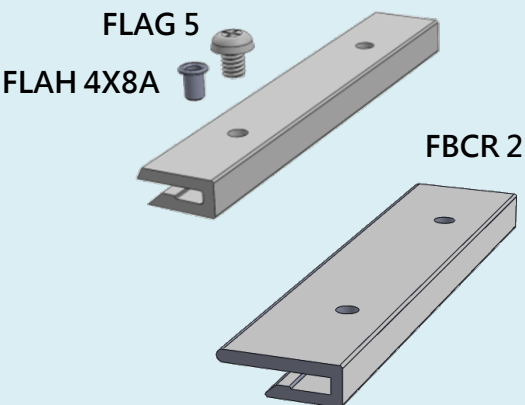
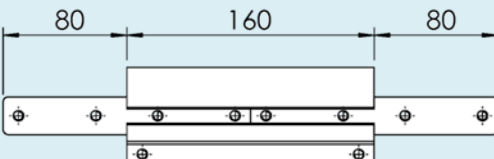
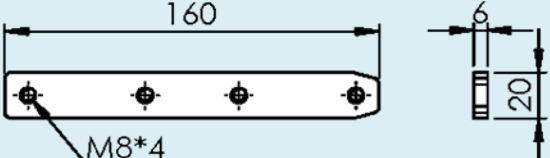
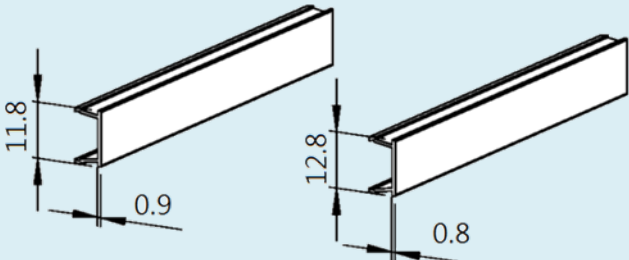
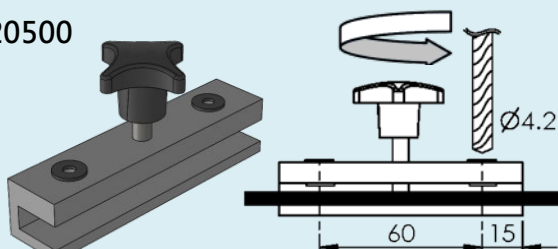
Chain

			F45
			FT
			FS
			FL
			FLP
			F65
			FM
			FMP
			F85
			F85P
			FH
			FK
			FKP
			FB140
			FB175
			FB295
			SPIRAL
			FW
			FLX
			FMX
			FHX
			FBX175
			FBX295
			ACC
			CA
			FC
			TOOL
			IDX
FBTP 5A85F	Friction top chain		
F5110459	Friction top link		
FBTP 5A85TF	Steel top chain		
F5110436	Steel top link		
<i>Tools and accessories</i>			
FBTT 13X16	Plastic pivot		
FMTD 6X50	Steel pin		
FBMJ 6P	Pin insertion tool		
FMMJ 6	Pin insertion tool		
FDSS 450	Silicone-based lubricant		

Conveyor beam



Conveyor beam

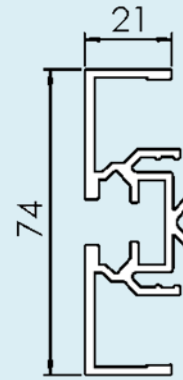
<p>FBCB 3A85 Length 3 m</p>		<p>F45 FT FS FL FLP F65 FM</p>
<p>Slide rail FBCR 25 FBCR 25POK Length 25 m HDPE White POK</p> <p>FLAH 4X8A Aluminium rivet</p> <p>FLAG 5 Plastic screw</p> <p>Slide rail FBCR 25B Length 25 m HDPE</p> <p><i>Note: The wide slide rails are not suitable for use in bends.</i></p>	<p>FBCR 25/FBCR25 POK</p> 	<p>FMP F85 F85P FH FK FKP FB140 FB175 FB295</p>
<p>FBCC 85X160 Beam section for chain installation ,including connection strips and screws</p>		<p>SPIRAL FW FLX FMX</p>
<p>Connecting strip with set screws FSCJ 6X160 H=20 mm Length 160 mm</p>		<p>FHX FBX175 FBX295</p>
<p>T-slot cover FCAC 2 Aluminium Length 2 mt</p> <p>FCAC 3P Polyvinyl chloride Length 3 mt</p>		<p>ACC CA FC TOOL IDX</p>
<p>F3920500 Drill fixture for slide rail</p>		

Conveyor beam

Half beam

FBCB 3A85H

Length 3 m

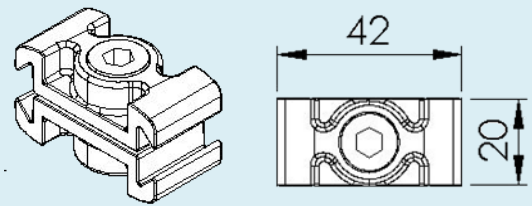


Beam clip

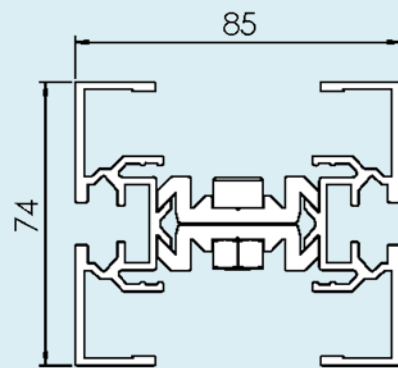
FBCE 42X20A

FBCE 42X20S

for spiral



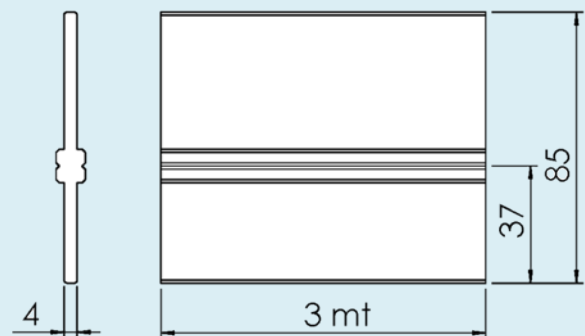
Split Conveyor beam assembled
Length 3mt



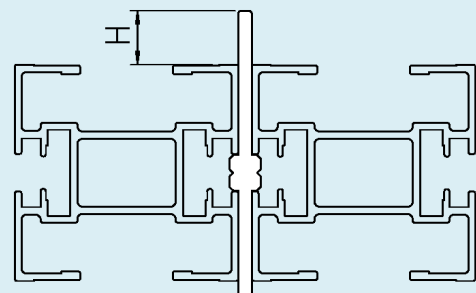
Beam spacer

FLCD 3

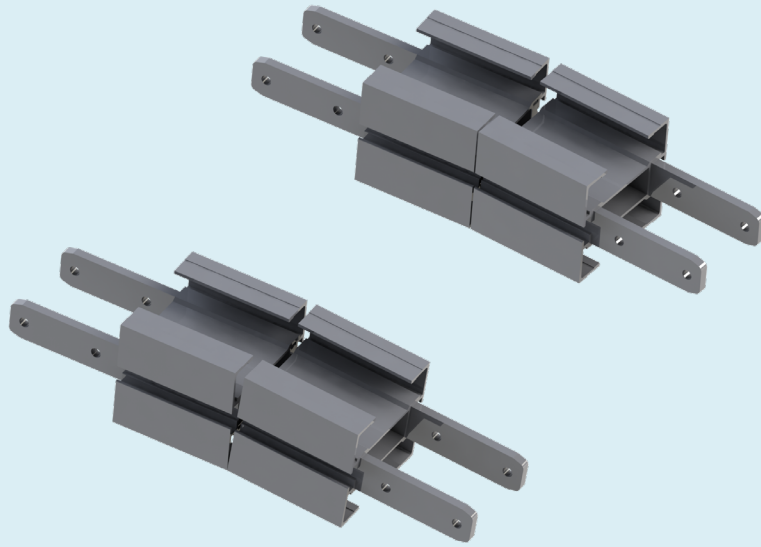
Aluminium, anodized
Length 3mt



FS	H=16.0mm
FL/F65	H=15.9mm
FM/F85/FH	H=10.5mm
FK	H=0.5mm



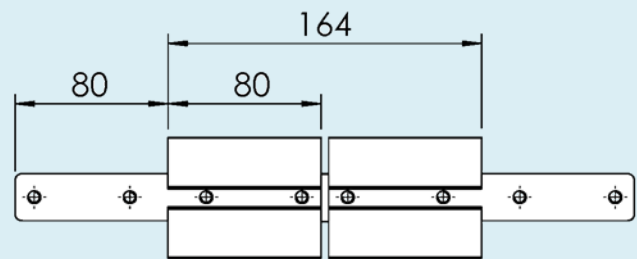
Articulated beam section



FBCH 5A85V Articulated beam section, vertical

FBCH 5A85H Articulated beam section, vertical

Slide rail: see "Conveyor beam"



F45

FT

FS

FL

FLP

F65

FM

FMP

F85

F85P

FH

FK

FKP

FB140

FB175

FB295

SPIRAL

FW

FLX

FMX

FHX

FBX175

FBX295

ACC

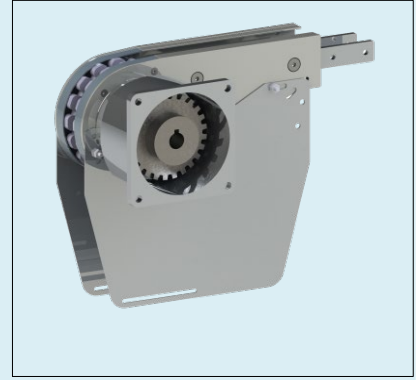
CA

FC

TOOL

IDX

End drive units



End drive units

<p>FBEB 0A85HL Drive unit Transmission on left-hand side</p>			<p>F45 FT FS FL FLP F65 FM FMP</p>
<p>FBEB 0A85HR Drive unit Transmission on right-hand side</p>			<p>F85 F85P FH FK FKP FB140 FB175 FB295</p>
<p>FBEB 0A85HLP Drive unit Direct drive, left-hand side</p>			<p>SPIRAL FW FLX FMX FHX FBX175 FBX295</p>
<p>FBEB 0A85HRP Drive unit Direct drive, right-hand side</p>			<p>ACC CA FC TOOL IDX</p>

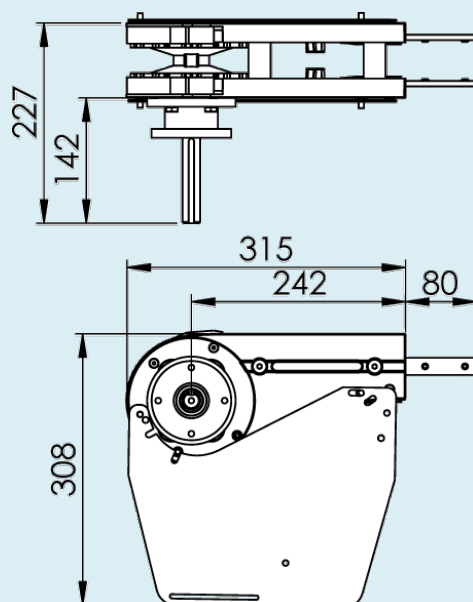
Maximum weight on conveyor : 200 kg
Maximum conveyor length : 30 M
Maximum conveyor speed : 60 M/min

End drive units



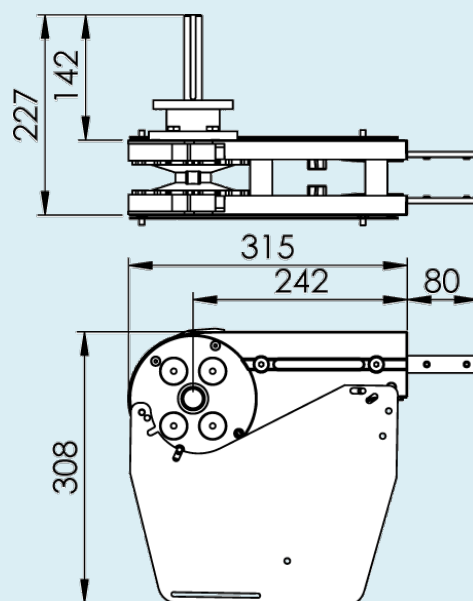
FBEB 0A85HNL
Dia. 25mm to 20mm

Drive unit
Direct drive
left-hand side
SEW SA37
SEW WA 30
SEW WA 20



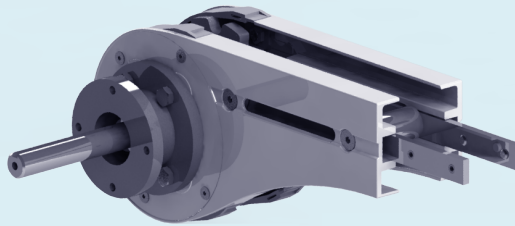
FBEB 0A85HNR
Dia. 25mm to 20mm

Drive unit
Direct drive
right-hand side
SEW SA37
SEW WA 30
SEW WA 20



Maximum weight on conveyor : 200 kg
Maximum conveyor length : 30 M
Maximum conveyor speed : 60 M/min

End drive units



F45

FT

FS

FL

FLP

F65

FM

FMP

F85

F85P

FH

FK

FKP

FB140

FB175

FB295

SPIRAL

FW

FLX

FMX

FHX

FBX175

FBX295

ACC

CA

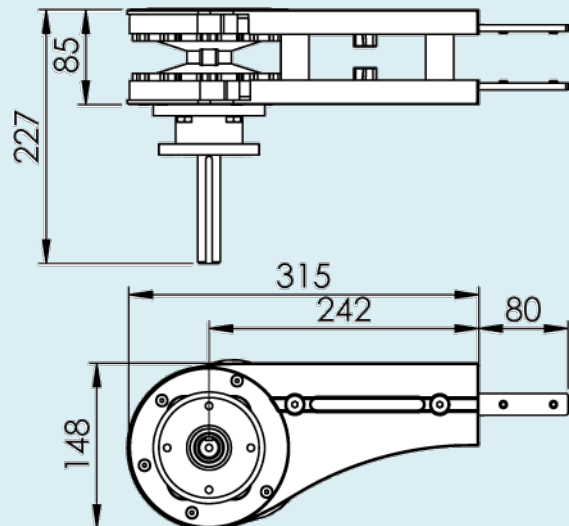
FC

TOOL

IDX

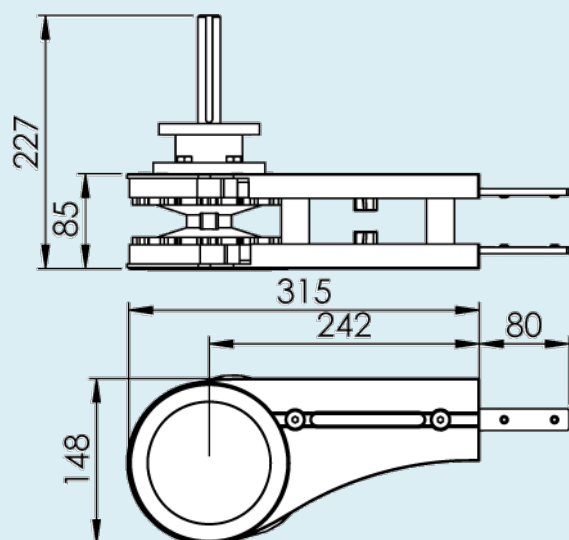
FBEB 0A85HNLGP
Dia. 25mm to 20mm

Drive unit
Direct drive
left-hand side
SEW SA37
SEW WA 30
SEW WA 20



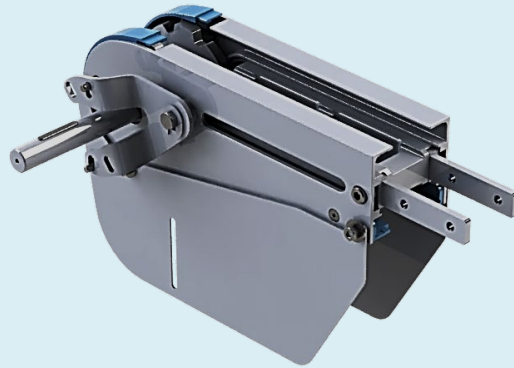
FBEB 0A85HNRGP
Dia. 25mm to 20mm

Drive unit
Direct drive
right-hand side
SEW SA37
SEW WA 30
SEW WA 20



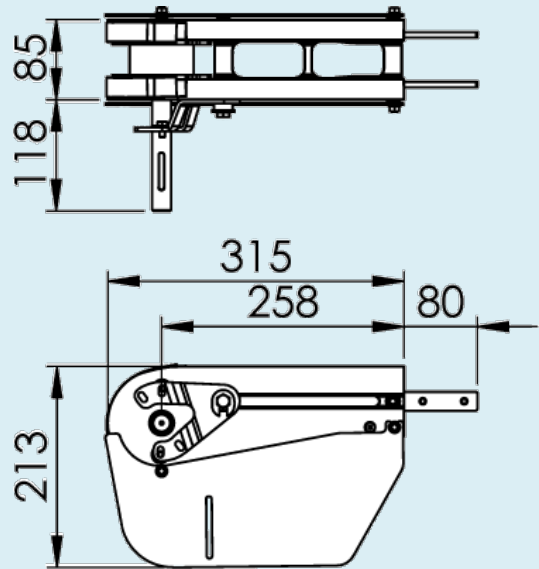
Maximum weight on conveyor : 200 kg
Maximum conveyor length : 30 M
Maximum conveyor speed : 60 M/min

End drive units



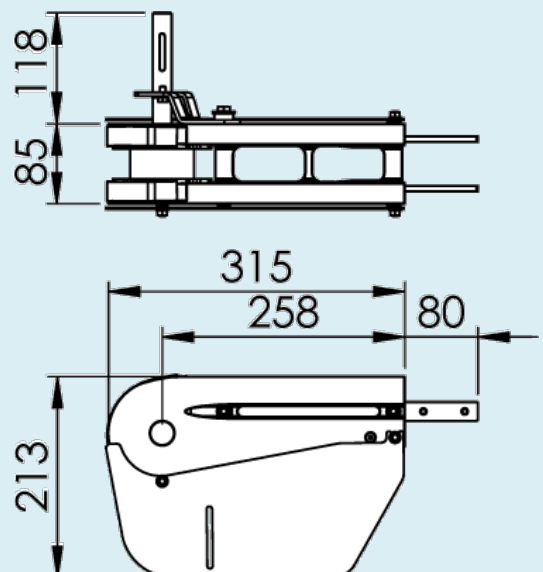
FBEB 0A85MNL
Dia. 20mm

Drive unit
Direct drive
left-hand side



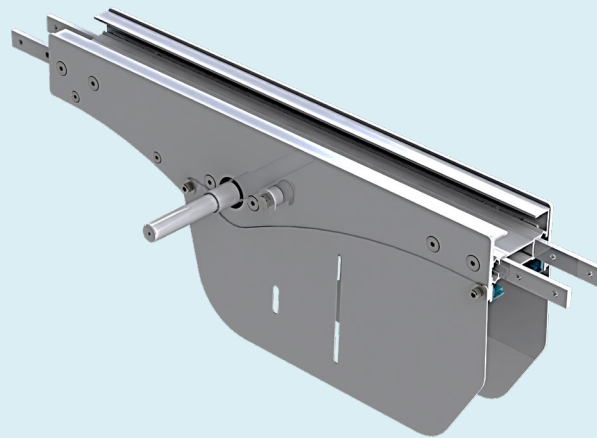
FBEB 0A85MNR
Dia. 20mm

Drive unit
Direct drive
left-hand side



Maximum weight on conveyor : 200 kg
Maximum conveyor length : 30 M
Maximum conveyor speed : 60 M/min

Intermediate drive units



F45

FT

FS

FL

FLP

F65

FM

FMP

F85

F85P

FH

FK

FKP

FB140

FB175

FB295

SPIRAL

FW

FLX

FMX

FHX

FBX175

FBX295

ACC

CA

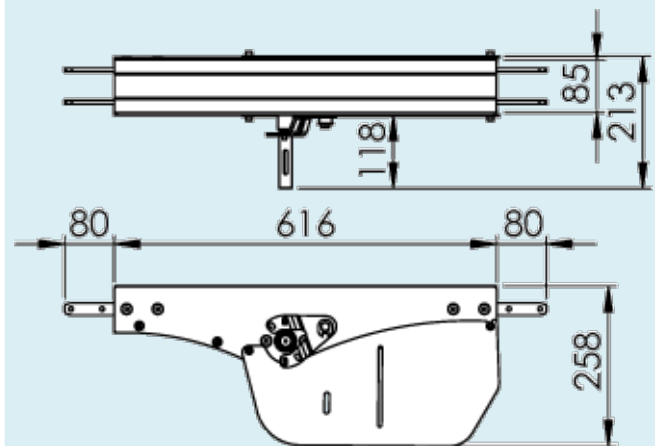
FC

TOOL

IDX

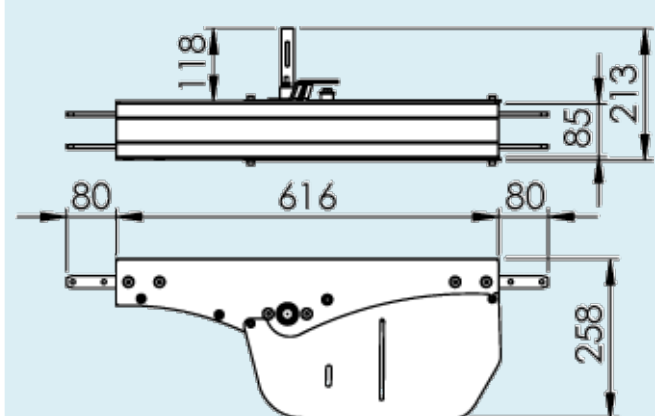
FBER 0A85MNLP

Drive unit
Transmission on
left-hand side



FBER 0A85MNRP

Drive unit
Transmission on
right-hand side

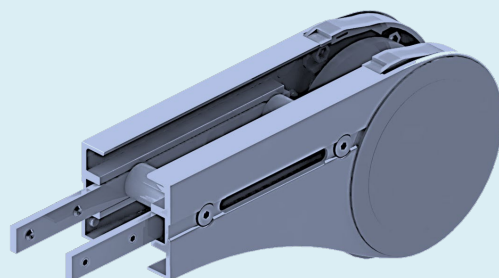


Maximum weight on conveyor : 200 kg

Maximum conveyor length : 30 M

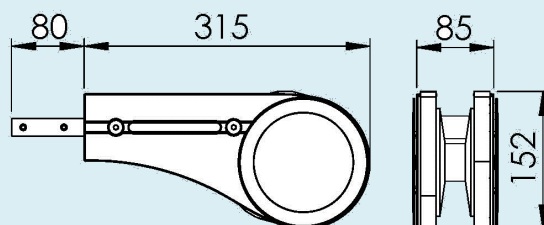
Maximum conveyor speed : 60 M/min

Idler end units



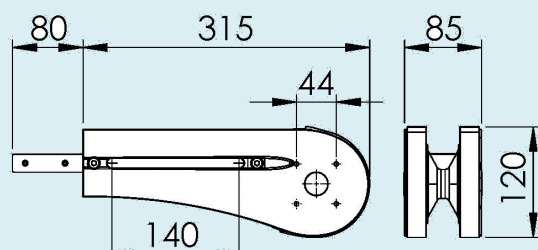
FBEJ A85

Idler end unit



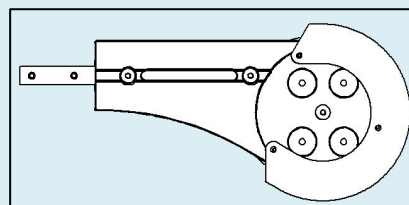
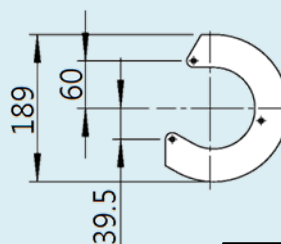
FBEJ A85S

Idler end unit

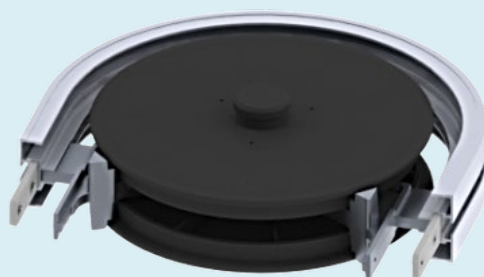


FMSJ 189

Protective cover for idler end unit



Horizontal wheel bends

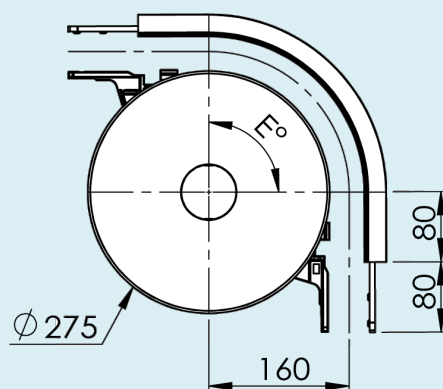


Horizontal wheel bend, 30~210°

FBBH EA85R160 R=160mm

The out bend is cut in the middle to the desired angle and assembled using connection strips.

The angle "E" must be specified when ordering.

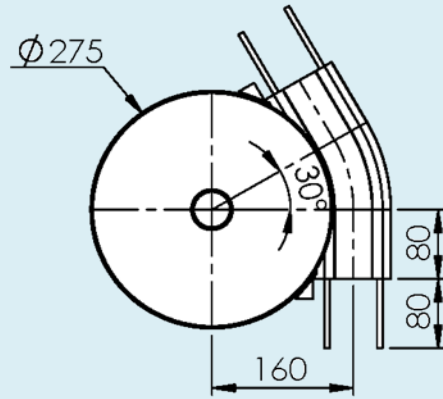


- F45
- FT
- FS
- FL
- FLP
- F65
- FM
- FMP
- F85**
- F85P
- FH
- FK
- FKP
- FB140
- FB175
- FB295
- SPIRAL
- FW
- FLX
- FMX
- FHX
- FBX175
- FBX295
- ACC
- CA
- FC
- TOOL
- IDX

Horizontal wheel bends

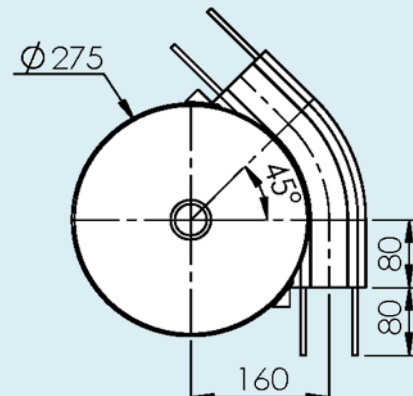
Horizontal wheel bend, 30°

FBH 30A85R160 Radius to centre of chain 160 mm



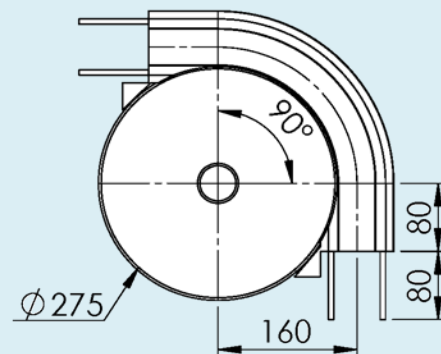
Horizontal wheel bend, 45°

FBH 45A85R160 Radius to centre of chain 160 mm



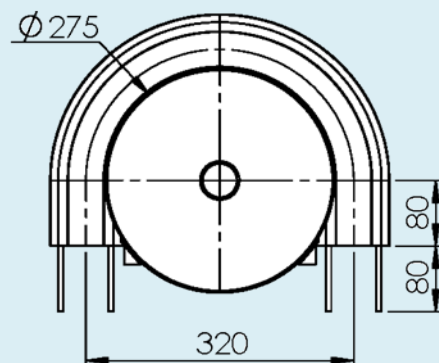
Horizontal wheel bend, 60°

FBH 90A85R160 Radius to centre of chain 160 mm



Horizontal wheel bend, 90°

FBH 180A85R160 Radius to centre of chain 160 mm



Horizontal plain bends



F45

FT

FS

FL

FLP

F65

FM

FMP

F85

F85P

FH

FK

FKP

FB140

FB175

FB295

SPIRAL

FW

FLX

FMX

FHX

FBX175

FBX295

ACC

CA

FC

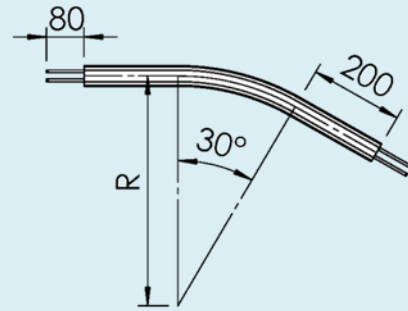
TOOL

IDX

Horizontal plain bends

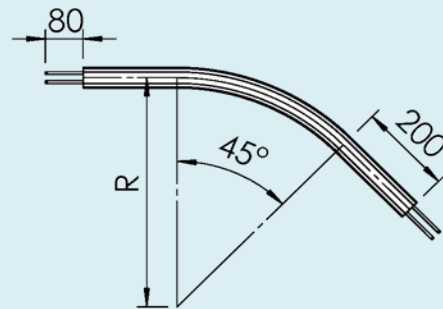
Horizontal plain bend, 30°
Radius to centre of beam:

FBBP 30A85R500 R=500 mm
FBBP 30A85R700 R=700 mm
FBBP 30A85R1000 R=1000mm



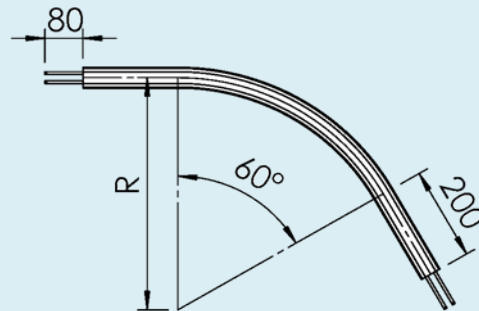
Horizontal plain bend, 45°
Radius to centre of beam:

FBBP 45A85R500 R=500 mm
FBBP 45A85R700 R=700 mm
FBBP 45A85R1000 R=1000mm



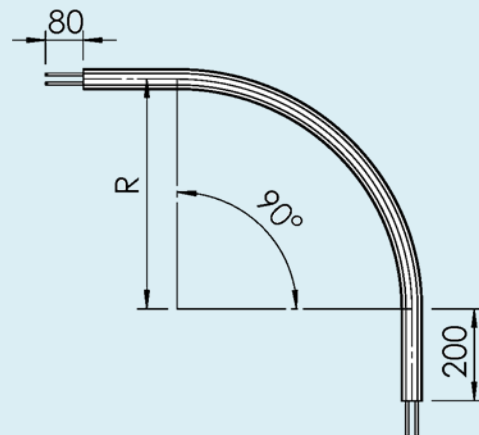
Horizontal plain bend, 60°
Radius to centre of beam:

FBBP 60A85R500 R=500 mm
FBBP 60A85R700 R=700 mm
FBBP 60A85R1000 R=1000mm

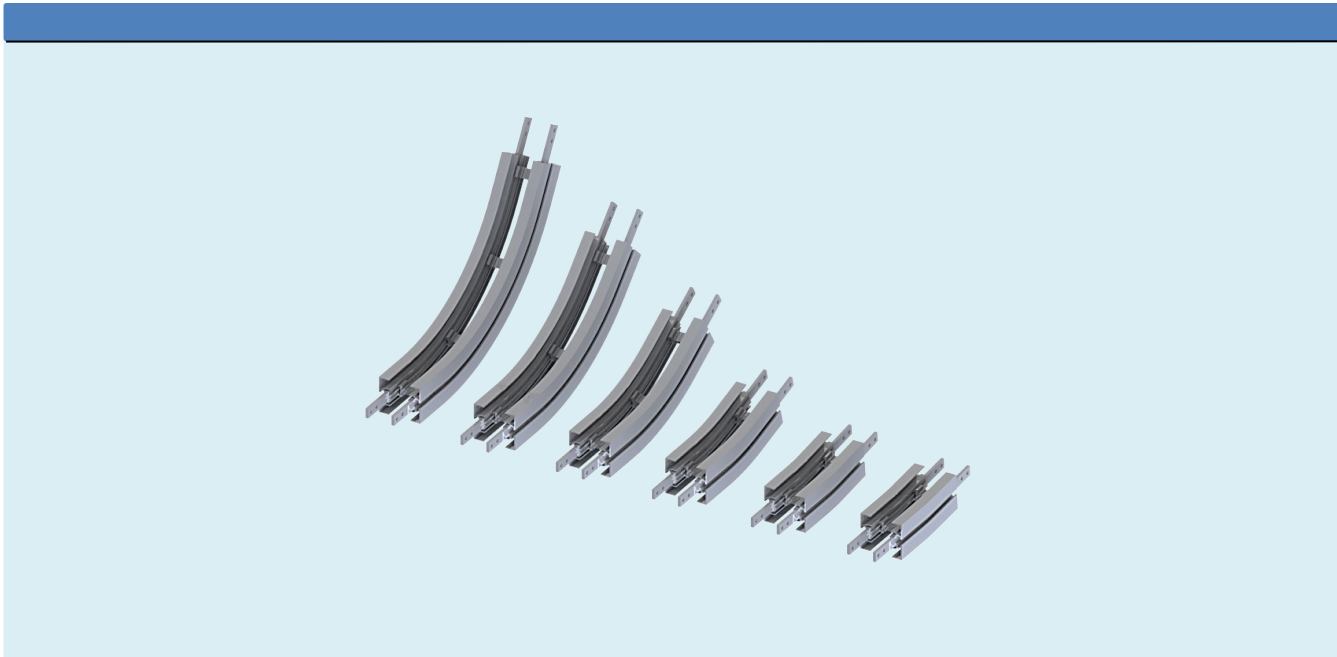


Horizontal plain bend, 90°
Radius to centre of beam:

FBBP 90A85R500 R=500 mm
FBBP 90A85R700 R=700 mm
FBBP 90A85R1000 R=1000mm



Vertical bends



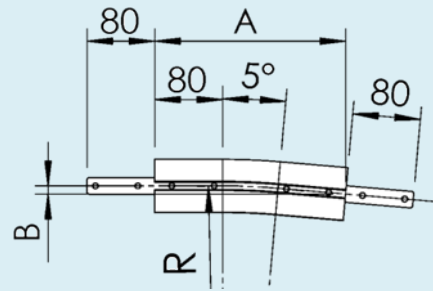
F45
FT
FS
FL
FLP
F65
FM
FMP
F85
F85P
FH
FK
FKP
FB140
FB175
FB295
SPIRAL
FW
FLX
FMX
FHX
FBX175
FBX295
ACC
CA
FC
TOOL
IDX

Vertical bends

Vertical bend, 5°
Radius to centre of beam:

FBV 5A85R400 R=400 mm

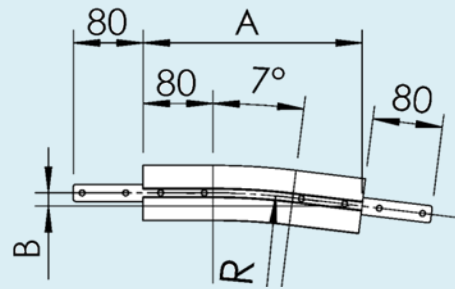
	R	A	B
FBV 5A85R400	400	195	9



Vertical bend, 7°
Radius to centre of beam:

FBV 7A85R400 R=400 mm

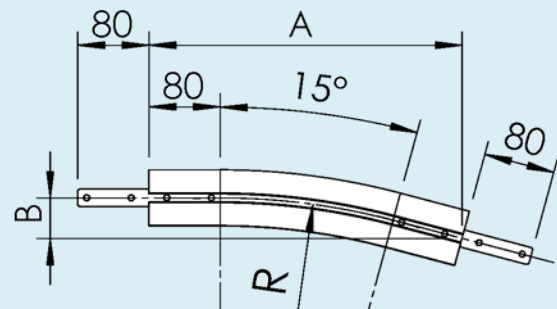
	R	A	B
FBV 7A85R400	400	208	13



Vertical bend, 15°
Radius to centre of beam:

FBV 15A85R400 R=400 mm
FBV 15A85R700 R=700 mm

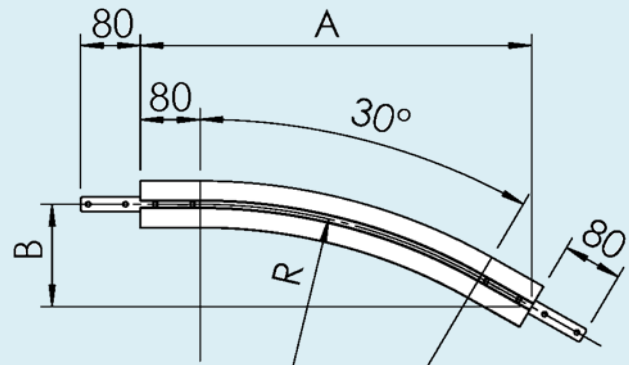
	R	A	B
FBV 15A85R400	400	261	34
FBV 15A85R700	700	338	45



Vertical bend, 30°
Radius to centre of beam:

FBV 30A85R400 R=400 mm
FBV 30A85R700 R=700 mm

	R	A	B
FBV 30A85R400	400	349	94
FBV 30A85R700	700	449	134



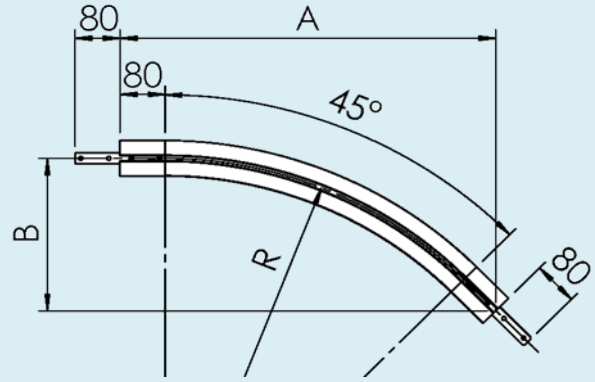
* Note: Special angles on request.

Vertical bends

Vertical bend, 45°
Radius to centre of beam:

FBBV 45A85R400 R=400 mm
FBBV 45A85R1000 R=1000 mm

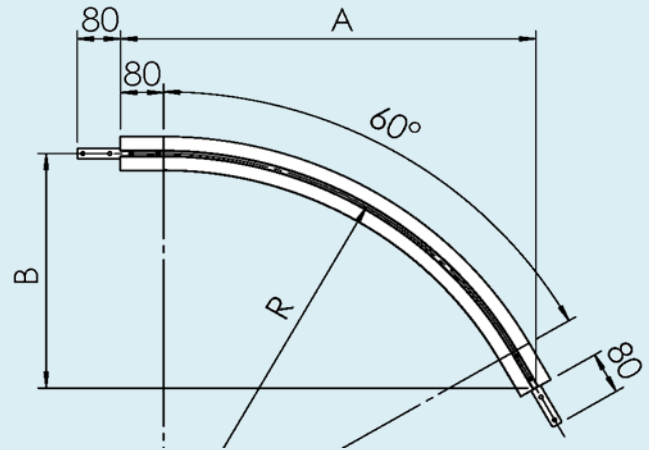
	R	A	B
FBBV 45A85R400	400	419	174
FBBV 45A85R1000	1000	844	350



Vertical bend, 60°
Radius to centre of beam:

FBBV 60A85R400 R=400 mm
FBBV 60A85R1000 R=1000 mm

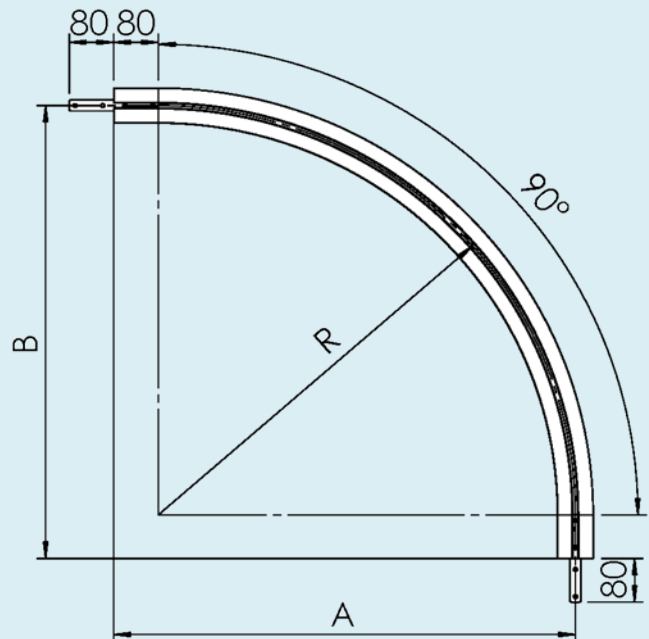
	R	A	B
FBBV 60A85R400	400	466	269
FBBV 60A85R1000	1000	986	569



Vertical bend, 90°
Radius to centre of beam:

FBBV 90A85R400 R=400 mm
FBBV 90A85R1000 R=1000 mm

	R	A	B
FBBV 90A85R400	400	480	480
FBBV 90A85R1000	1000	1080	1080



F45

FT

FS

FL

FLP

F65

FM

FMP

F85

F85P

FH

FK

FKP

FB140

FB175

FB295

SPIRAL

FW

FLX

FMX

FHX

FBX175

FBX295

ACC

CA

FC

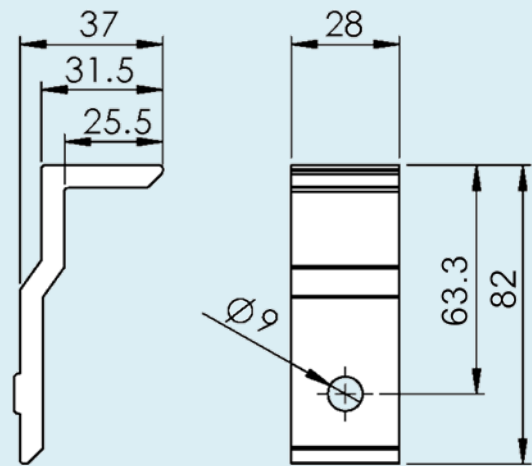
TOOL

IDX

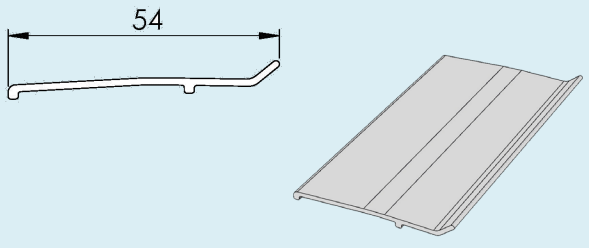
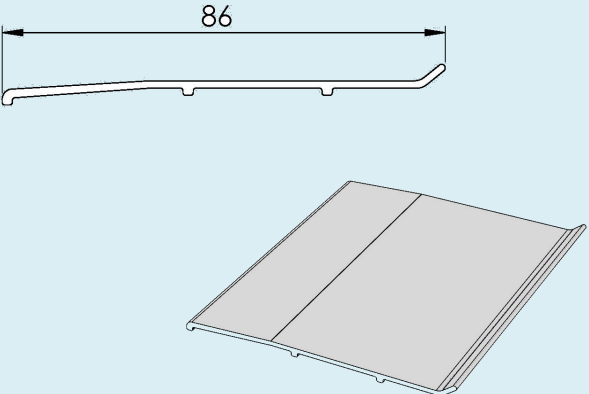
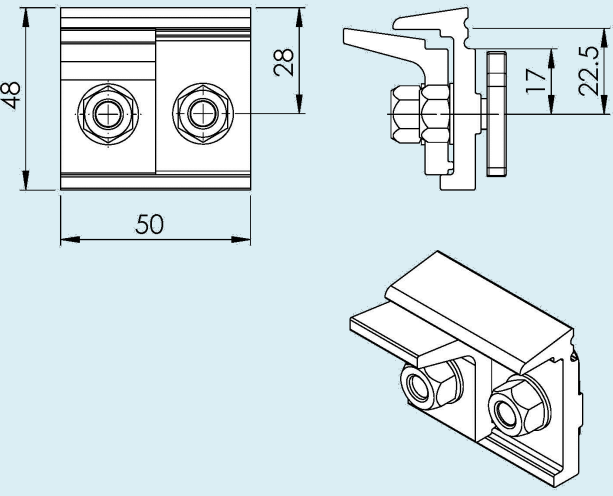
* Note: Special angles on request.

F85-Support brackets

FBRB 22X63 Beam support bracket



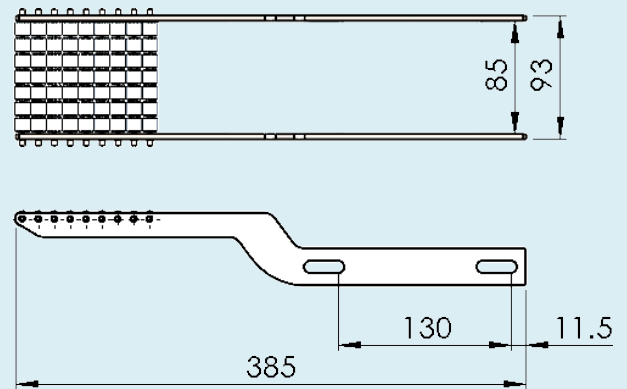
Drip catchers

<p>Drip catcher</p> <p>FHDS 3X53</p> <p>Width 54 mm Length 3 m</p>		<p>F45</p> <p>FT</p> <p>FS</p> <p>FL</p> <p>FLP</p> <p>F65</p> <p>FM</p>
<p>Drip catcher</p> <p>FHDS 3X83</p> <p>Width 86 mm Length 3 m</p>		<p>FMP</p> <p>F85</p> <p>F85P</p> <p>FH</p> <p>FK</p> <p>FKP</p> <p>FB140</p> <p>FB175</p>
<p>Drip catcher bracket assembly Including T-bolts and nuts</p> <p>FHDR 23</p>		<p>FB295</p> <p>SPIRAL</p> <p>FW</p> <p>FLX</p> <p>FMX</p> <p>FHX</p> <p>FBX175</p> <p>FBX295</p> <p>ACC</p>
		<p>CA</p> <p>FC</p> <p>TOOL</p> <p>IDX</p>

Bridge for F85 conveyor

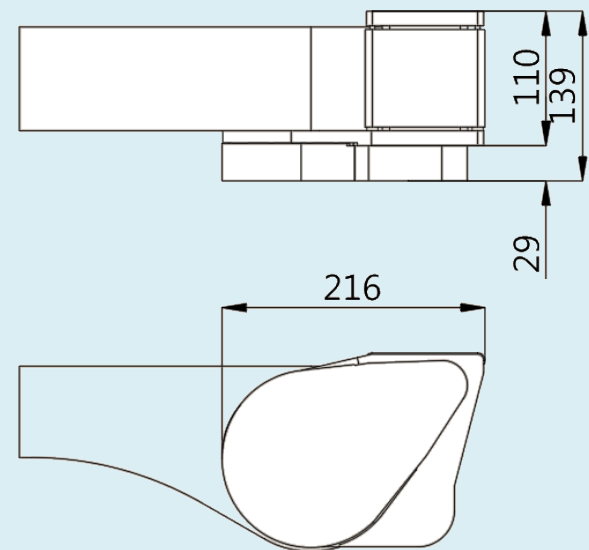
roller bridge

Bridge-FM



Belt bridge

FMEF DBL



FMEF DBR

