

Conveyor accessories

| | |
|---|----|
| Contents | |
| Guide rails | 3 |
| Guide discs for bends | 5 |
| Fixed guide rail brackets, aluminium | 7 |
| Adjustable guide rail brackets, aluminium | 10 |
| Adjustable guide rail brackets, polyamide | 11 |
| Built-up guide rail brackets | 19 |
| Conveyor supports | 22 |

F45

FT

FS

FL

FLP

F65

FM

FMP

F85

F85P

FH

FK

FKP

FB140

FB175

FB295

SPIRAL

FW

FLX

FMX

FHX

FBX175

FBX295

ACC

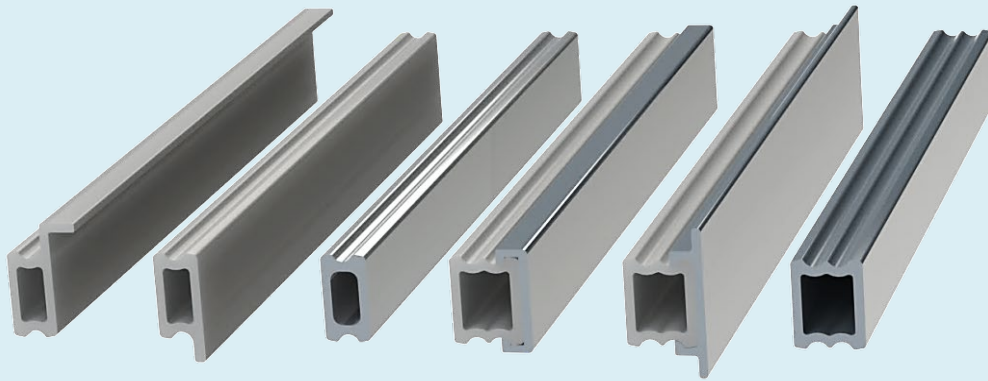
CA

FC

TOOL

IDX

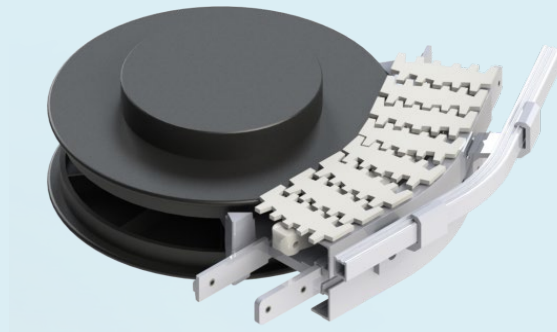
Guide rails



Guide rails

| | | |
|---|--|---|
| <p>Straight 10 mm FLRS 3X10 Aluminium, length 3mt FLRS 3X10T Steel, length 3mt</p> <p>Flexible rail 10 mm FLRS 3X10P Polyethylene, length 3mt</p> <p>Straight rail 10 mm flanged FLRS 3X10F Aluminium, length 3mt</p> | | <p>F45</p> <p>FT</p> <p>FS</p> <p>FL</p> <p>FLP</p> <p>F65</p> <p>FM</p> <p>FMP</p> <p>F85</p> |
| <p>FLRJ 10 Connecting plug 10 mm FLRE 10 End plug 10 mm</p> <p>Note: Not for steel guide rail must be ordered in multiples of 25(25, 50, 75, ...)</p> | | <p>F85P</p> <p>FH</p> <p>FK</p> <p>FKP</p> <p>FB140</p> |
| <p>Straight 15 mm FLRS 3X15 Aluminium, length 3mt</p> <p>Flexible rail 15 mm FLRS 3X15P Polyethylene, length 3mt</p> | | <p>FB175</p> <p>FB295</p> <p>SPIRAL</p> <p>FW</p> |
| <p>Guide rail cover for 15 mm guide rail FLRT 3X23 Polyethylene, length 3mt FLRT 3X23U UHMW-PE, length 3mt FLRT 3X33D Polyethylene, length 3mt</p> | | <p>FLX</p> <p>FMX</p> <p>FHX</p> <p>FBX175</p> <p>FBX295</p> |
| <p>FLRJ 15 Connecting plug 15 mm FLRE 15 End plug 15 mm</p> | | <p>ACC</p> <p>CA</p> <p>FC</p> <p>TOOL</p> <p>IDX</p> |
| <p>FLRJ 100 Connecting sleeve Length 100 mm Including set screws</p> | | |

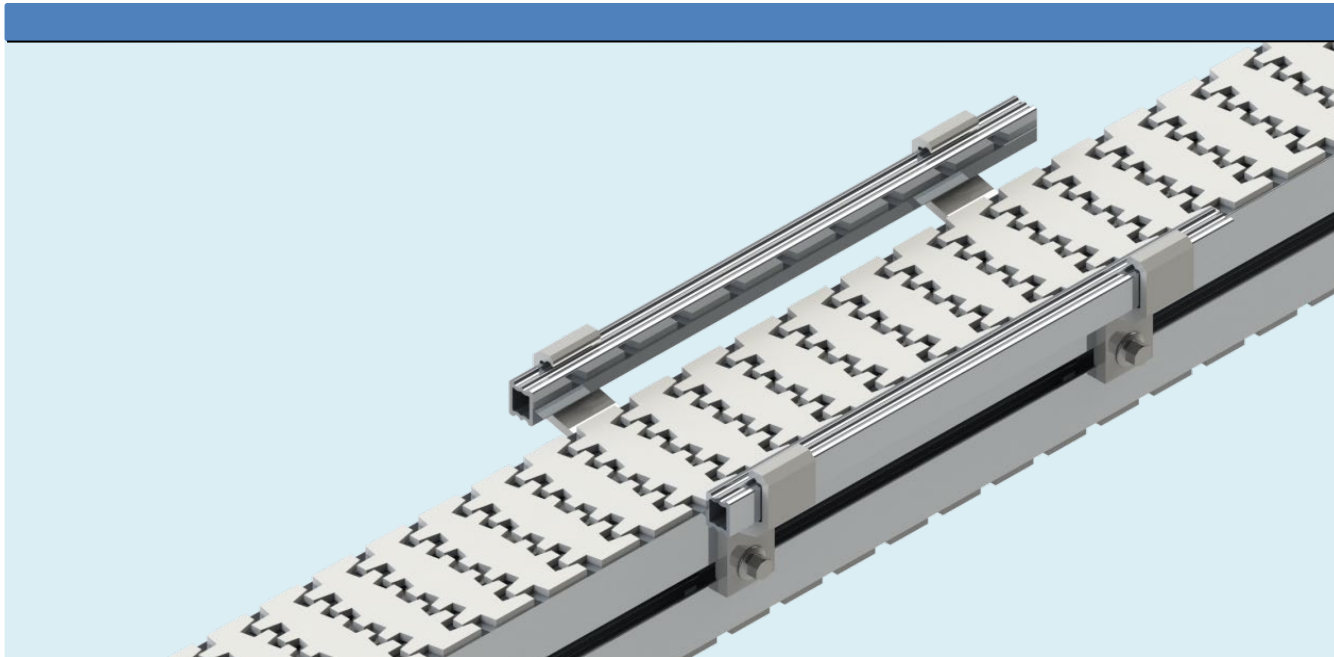
Guide discs for bends



Guide discs for horizontal wheel bends

| | | | |
|---------------------------------|-----------|--|---------------|
| Guide discs for wheel bends | | | F45 |
| FLRG 235 | d= 235 mm | | FT |
| FLRG 212 | d= 212 mm | | FS |
| FLRG 187 | d= 187 mm | | FL |
| FLRG 162 | d= 162 mm | | FLP |
| Guide discs for bend drive unit | | | F65 |
| FLRG 235H | d= 235 mm | | FM |
| FLRG 212H | d= 212 mm | | FMP |
| FLRG 187H | d= 187 mm | | F85 |
| FLRG 162H | d= 162 mm | | F85P |
| | | | FH |
| | | | FK |
| | | | FKP |
| | | | FB140 |
| | | | FB175 |
| | | | FB295 |
| | | | SPIRAL |
| | | | FW |
| | | | FLX |
| | | | FMX |
| | | | FHX |
| | | | FBX175 |
| | | | FBX295 |
| | | | ACC |
| | | | CA |
| | | | FC |
| | | | TOOL |
| | | | IDX |

Fixed guide rail brackets, aluminium



| Bracket type | FS | FL | FM | FH | FK | FB |
|--------------|-----|-----|-----|-----|-----|-----|
| FLRB 11X30* | 47 | 67 | - | - | - | - |
| FLRB 23X30 | 61 | 81 | - | - | - | - |
| FLRB 35X30** | 85 | 105 | - | - | - | - |
| FLRB 48X30 | 111 | 131 | - | - | - | - |
| FLRB 29X36 | 82 | 102 | - | - | - | - |
| FLRB 16X42 | 47 | 67 | 87 | 107 | - | 184 |
| FLRB 28X42 | 71 | 91 | 111 | 131 | - | 208 |
| FLRB 40X42 | 95 | 115 | 135 | 155 | - | 232 |
| FLRB 49X42 | 113 | 133 | 153 | 173 | - | 250 |
| FLRB 53X42 | 121 | 141 | 161 | 181 | - | 258 |
| FLRB 65X42 | 145 | 165 | 185 | 205 | - | 282 |
| FLRB 90X42 | 195 | 215 | 235 | 255 | - | 332 |
| FLRB 16X54 | - | - | - | - | 107 | 184 |
| FLRB 40X54 | - | - | - | - | 155 | 232 |
| FLRB 65X54 | - | - | - | - | 205 | 282 |

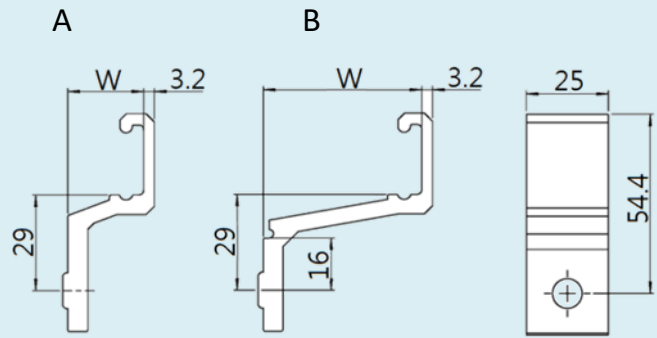
* 10 mm guide rail only

** If type FLRB 35X30 is used with angle plate, use 10 mm guide rail.

Fixed guide rail brackets, aluminium

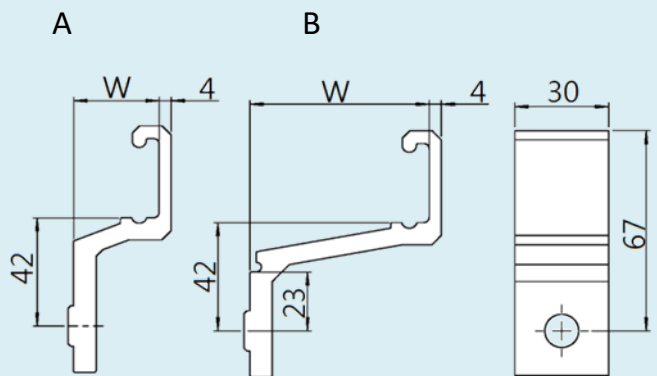
Guide rail bracket height 30 mm

FLRB 11X30 W= 11 mm Fig. A
FLRB 23X30 W= 23 mm Fig. A
FLRB 35X30 W= 35 mm Fig. B
FLRB 48X30 W= 48 mm Fig. B
FLRB 29X36 Height 36 mm
 W= 29 mm
 Guide rail bracket
 for FL pallets.



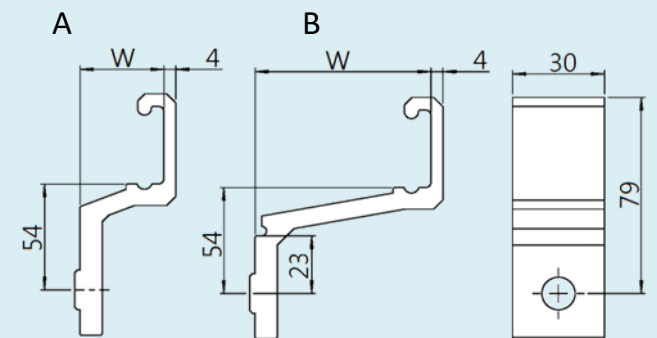
Guide rail bracket height 42 mm

FLRB 16X42 W= 16 mm Fig. A
FLRB 28X42 W= 28 mm Fig. A
FLRB 40X42 W= 40 mm Fig. B
FLRB 49X42 W= 49 mm Fig. B
FLRB 53X42 W= 53 mm Fig. B
FLRB 65X42 W= 65 mm Fig. B
FLRB 90X42 W= 90 mm Fig. B



Guide rail bracket height 54 mm

FLRB 16X54 W= 16 mm Fig. A
FLRB 40X54 W= 40 mm Fig. B
FLRB 65X54 W= 65 mm Fig. B



F45

FT

FS

FL

FLP

F65

FM

FMP

F85

F85P

FH

FK

FKP

FB140

FB175

FB295

SPIRAL

FW

FLX

FMX

FHX

FBX175

FBX295

ACC

CA

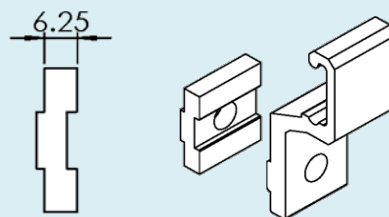
FC

TOOL

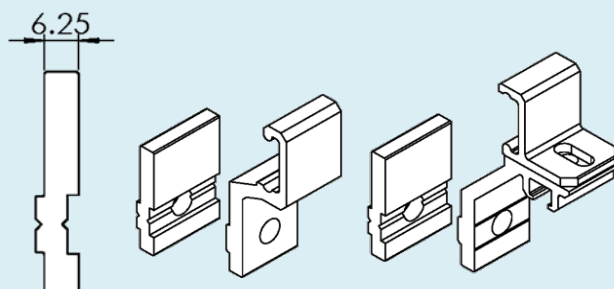
IDX

Accessories

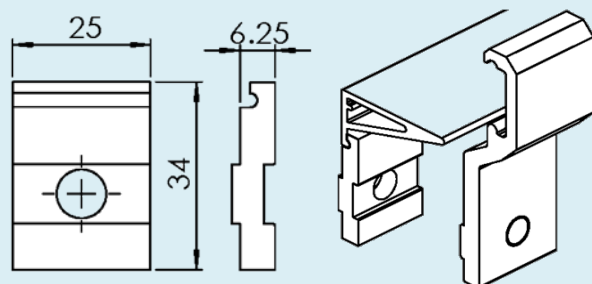
FLRD 6 Distance piece
(aluminium)
Thickness 6.25 mm



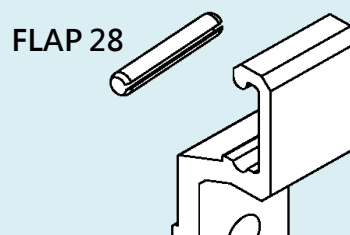
FLRD 6C Distance piece
(aluminium)
for conveyor system FK
Thickness 6.25 mm



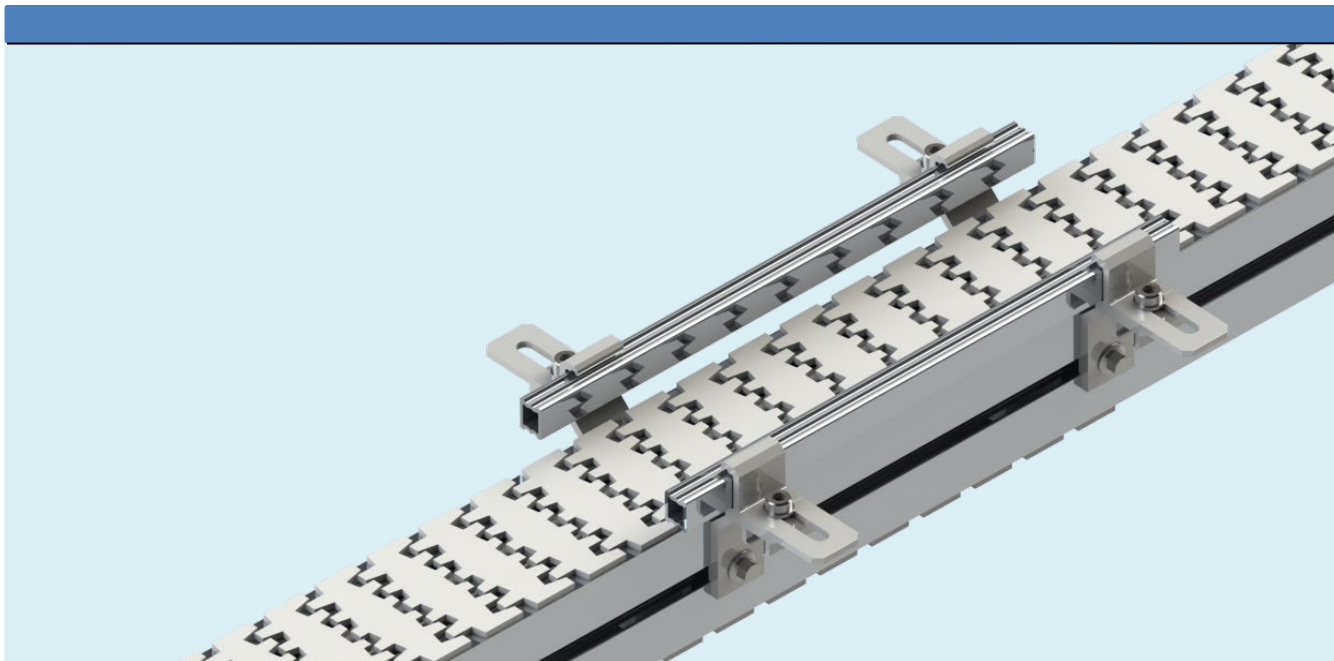
FLRD 6P Distance piece
(polyamide)
Thickness 6.25 mm
FLRD 6 P can hold angle
plates (FL only) not for
FK



FLAP 28 Spring pin for guide rail
bracket



Adjustable guide rail brackets, aluminium



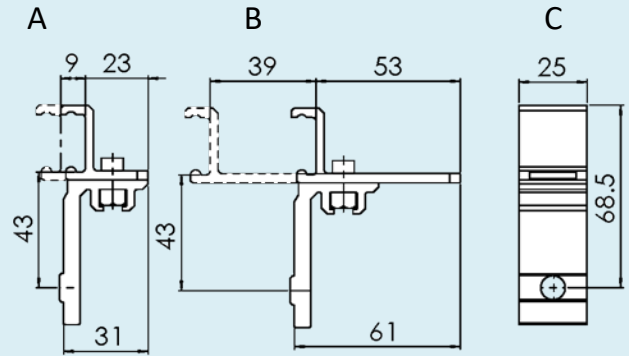
- F45
- FT
- FS
- FL
- FLP
- F65
- FM
- FMP
- F85
- F85P
- FH
- FK
- FKP
- FB140
- FB175
- FB295
- SPIRAL
- FW
- FLX
- FMX
- FHX
- FBX175
- FBX295
- ACC
- CA**
- FC
- TOOL
- IDX

| Bracket type | FS | FL | FM | FH | FK | FB |
|---------------|-------|--------|--------|--------|--------|---------|
| FLRA 8X9X45 | 16-34 | 36-54 | - | - | - | - |
| FLRA 8X39X45 | 0-34 | 0-54 | - | - | - | - |
| FLRA 26X9X45 | 52-70 | 72-90 | - | - | - | - |
| FLRA 26X39X45 | 0-70 | 12-90 | - | - | - | - |
| FLRA 16X30X52 | 0-49 | 9-69 | 29-89 | 49-109 | - | 126-186 |
| FLRA 41X30X52 | 39-99 | 59-119 | 79-139 | 99-159 | - | 176-236 |
| FLRA 16X30X64 | - | - | - | - | 49-109 | 126-186 |

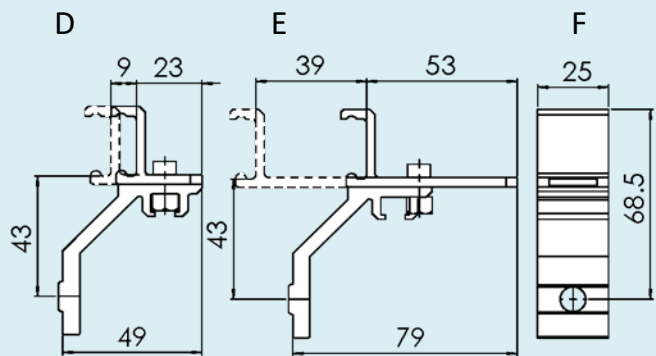
Adjustable guide rail brackets, aluminium

Adjustable guide rail
bracket assembly
Including bolt and nut

FLRA 8X9X45 See Figure A, C
FLRA 8X39X45 See Figure B, C

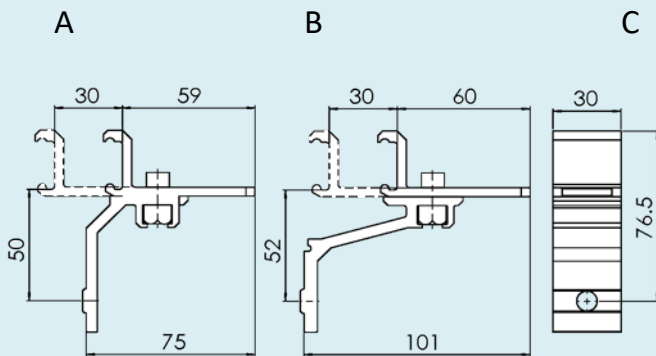


FLRA 26X9X45 See Figure D, F
FLRA 26X39X45 See Figure E, F



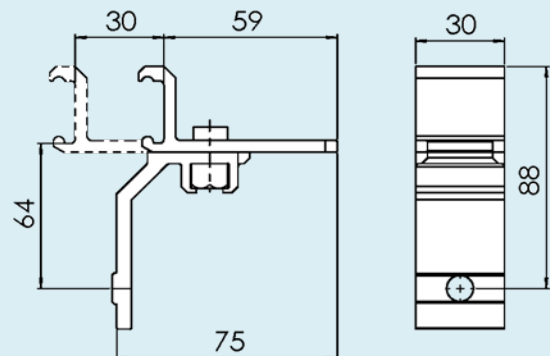
Adjustable guide rail
bracket assembly
Including bolt and nut

FLRA 16X30X52 See Figure A, C
FLRA 41X30X52 See Figure B, C

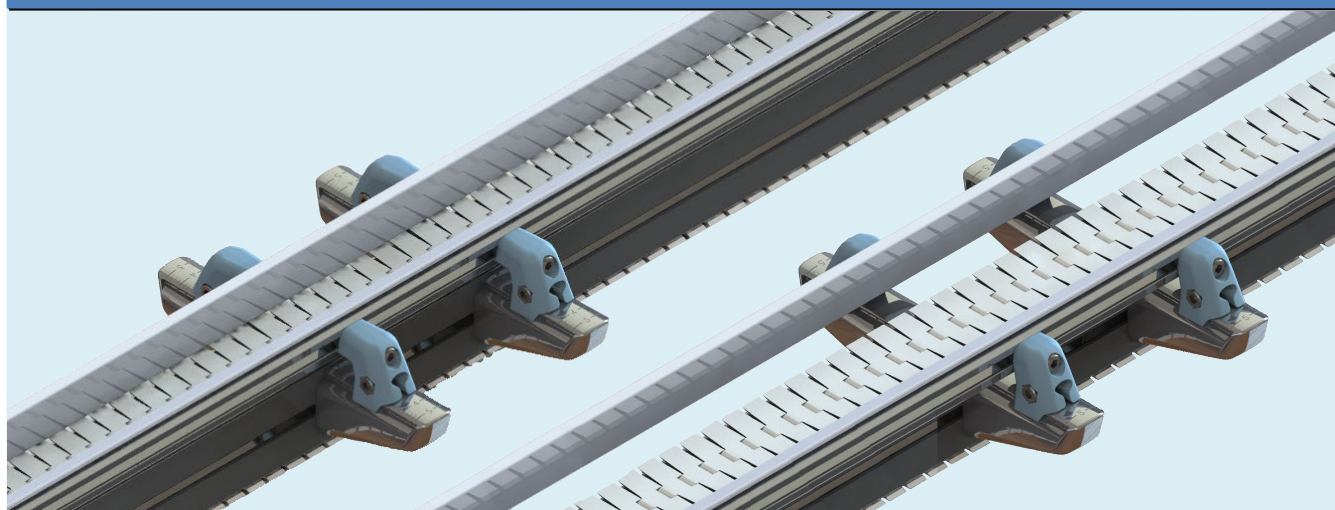


Adjustable guide rail
bracket assembly
Including bolt and nut

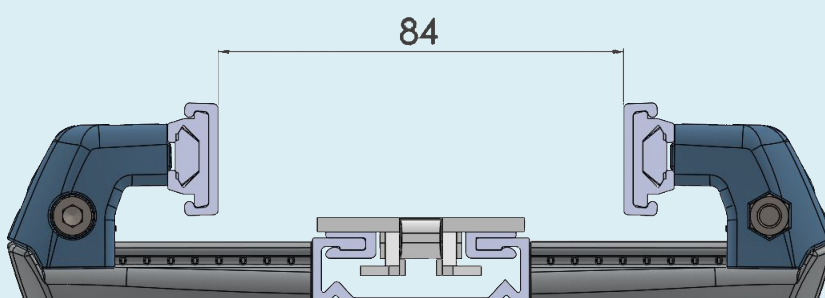
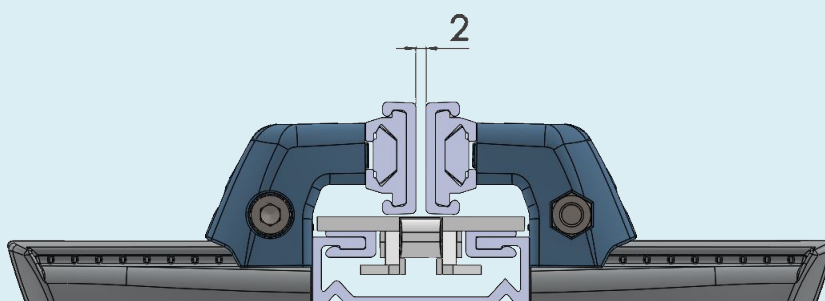
FLRA 16X30X64



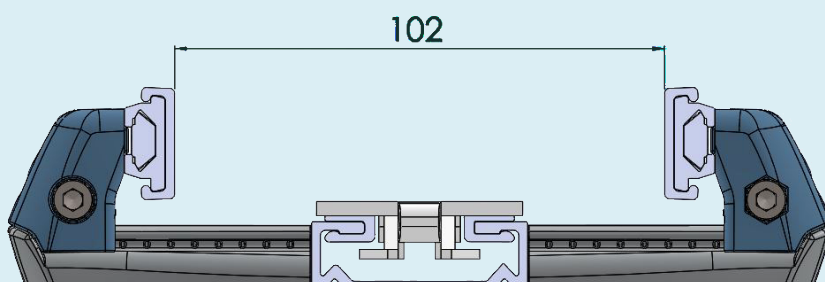
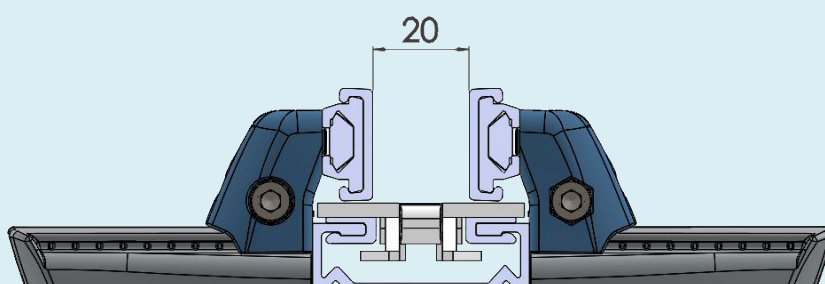
Adjustable guide rail brackets for F45



FURA 30X41X37



FURA 40X41X37



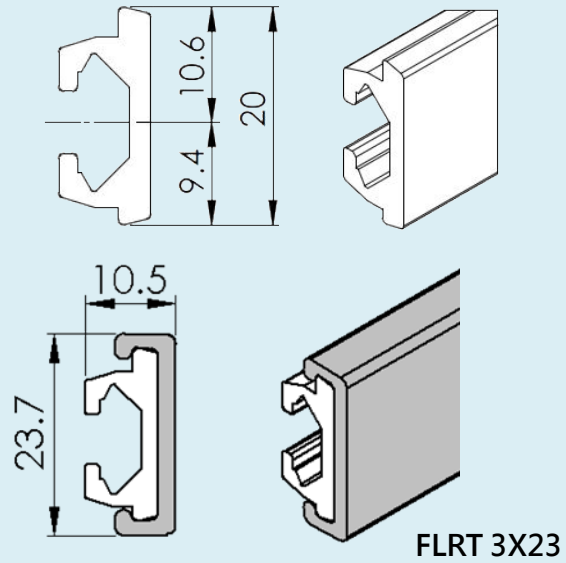
| |
|-----------|
| F45 |
| FT |
| FS |
| FL |
| FLP |
| F65 |
| FM |
| FMP |
| F85 |
| F85P |
| FH |
| FK |
| FKP |
| FB140 |
| FB175 |
| FB295 |
| SPIRAL |
| FW |
| FLX |
| FMX |
| FHX |
| FBX175 |
| FBX295 |
| ACC |
| CA |
| FC |
| TOOL |
| IDX |

Adjustable guide rail brackets for F45

Guide rail, aluminium

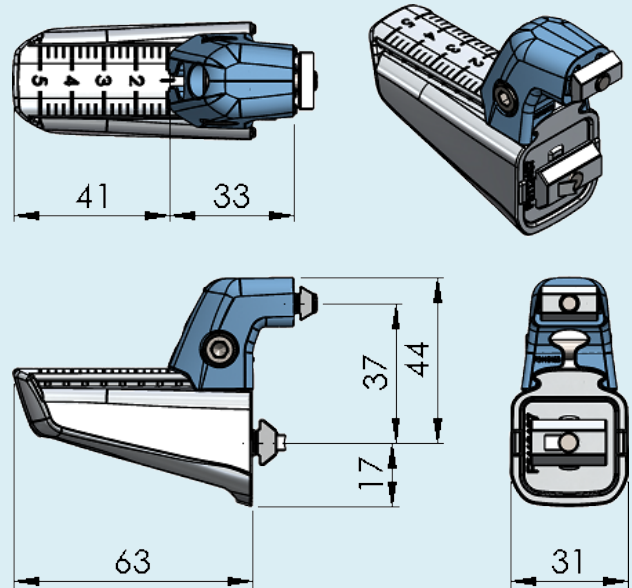
FURS 3X8

Length 3 m



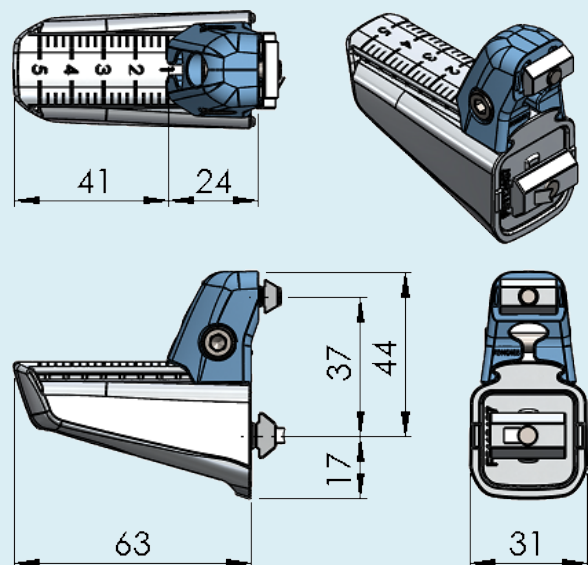
FURA 30X41X37

Guide rail bracket for F45
Including mounting hardware



FURA 40X41X37

Guide rail bracket for F45
Including mounting hardware



F45

FT

FS

FL

FLP

F65

FM

FMP

F85

F85P

FH

FK

FKP

FB140

FB175

FB295

SPIRAL

FW

FLX

FMX

FHX

FBX175

FBX295

ACC

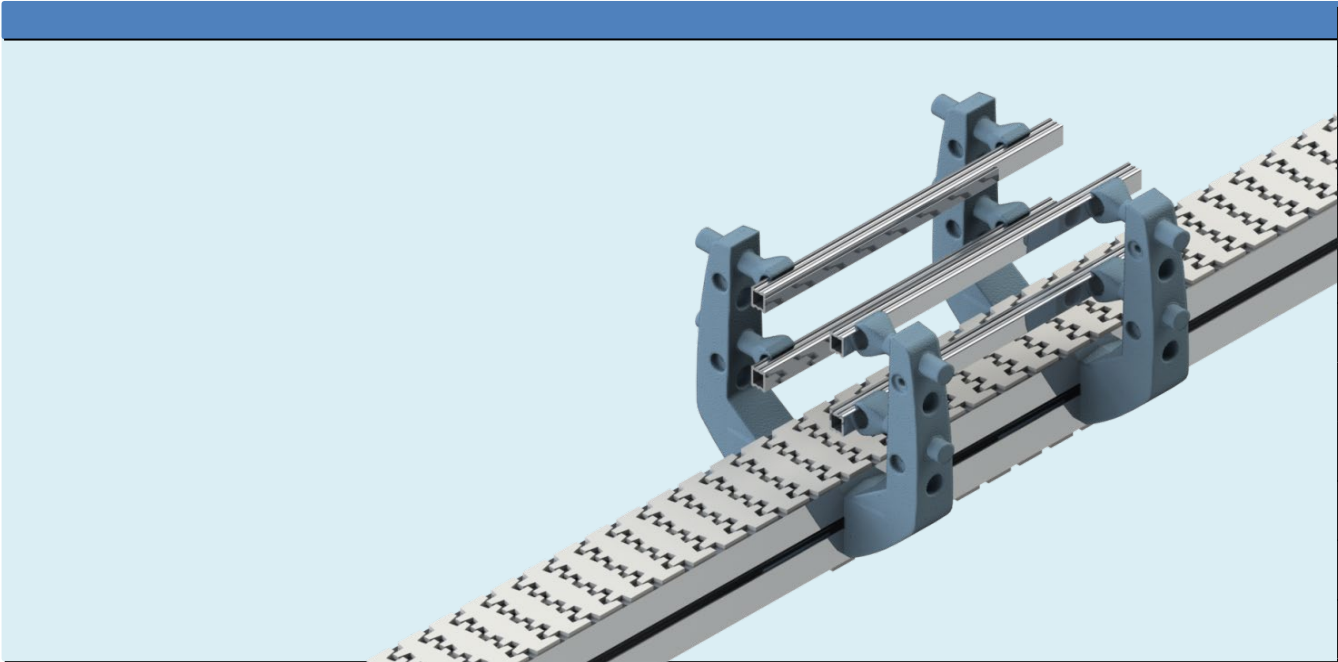
CA

FC

TOOL

IDX

Adjustable guide rail brackets, polyamide



Guide rail bracket support for use with guide rail clamp FLRK 18X40/60/80 C
Including screw and nut (screw can be replaced by star knob FLAR 6x20)

Mounting to beam:

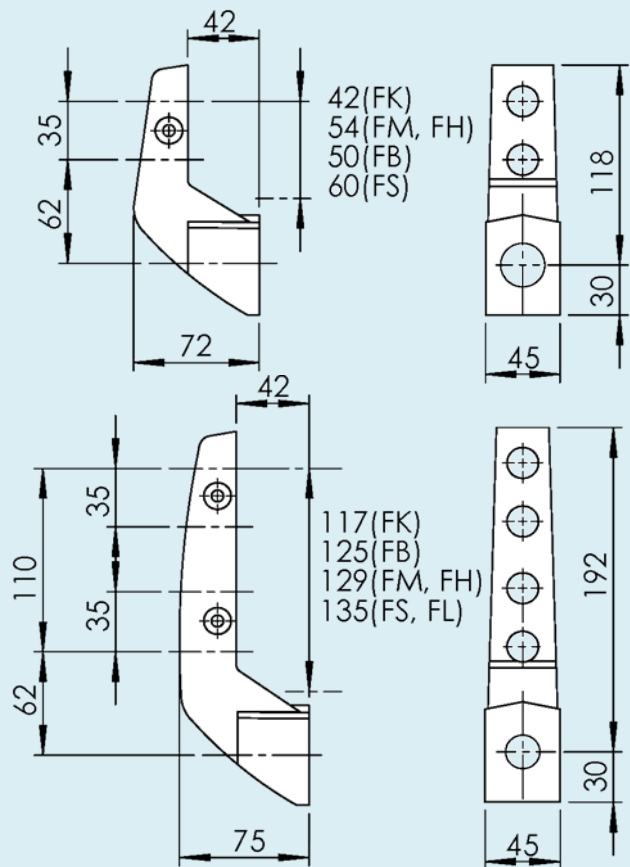
- FLAT 17
- FLAN 8
- BRB 8,4x16

FLRF 42X62A35

For 1-2 guide rail levels

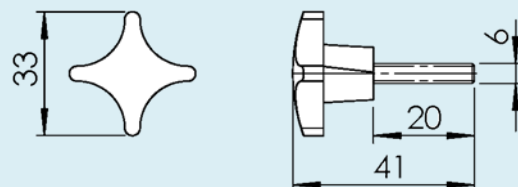
FLRF 42X62A110

For 1-4 guide rail levels



FLAR 6X20

Star Knob
M6



| |
|-----------|
| F45 |
| FT |
| FS |
| FL |
| FLP |
| F65 |
| FM |
| FMP |
| F85 |
| F85P |
| FH |
| FK |
| FKP |
| FB140 |
| FB175 |
| FB295 |
| SPIRAL |
| FW |
| FLX |
| FMX |
| FHX |
| FBX175 |
| FBX295 |
| ACC |
| CA |
| FC |
| TOOL |
| IDX |

Adjustable guide rail brackets, polyamide

Fixed guide rail bracket, polyamide
(FS, F65)

FLRB 11X30C

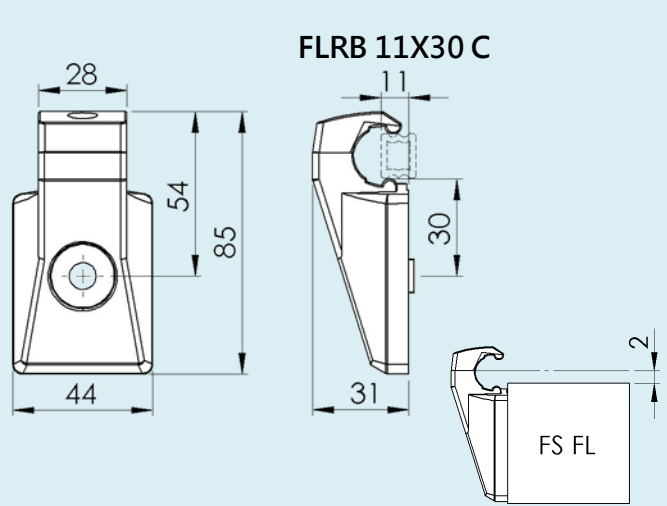
Fixed guide rail bracket - Polyamide

Can be used with FS and F65 conveyor beam.

Mounting to beam:

FLAT 17, FLAN 8, BRB 8,4X16

Do not overtighten (max torque: 10Nm)



Fixed guide rail bracket, polyamide
(FS, F65, F85, FH, F175/F295)

FLRB 16X42C

FLRB 40X42C

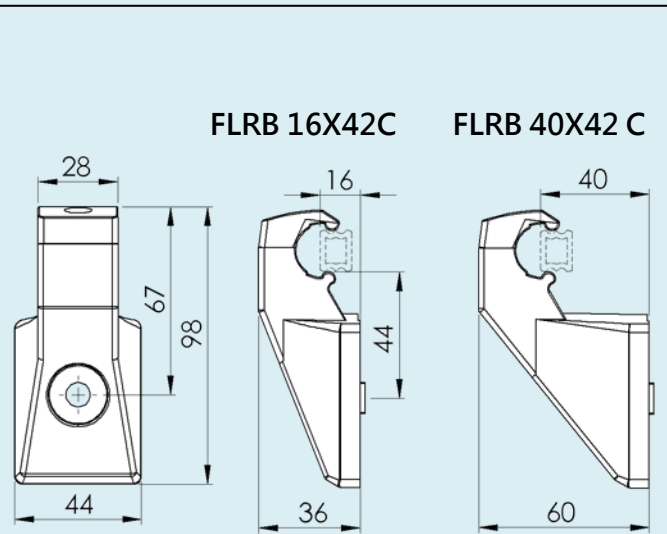
Fixed guide rail bracket - Polyamide
Width 16 mm / Width 40 mm

Can be used with FS, F65, F85, FH,
F175/F295 conveyor beam.

Mounting to beam:

FLAT 17, FLAN 8, BRB 8,4X16

Do not overtighten (max torque: 10Nm)



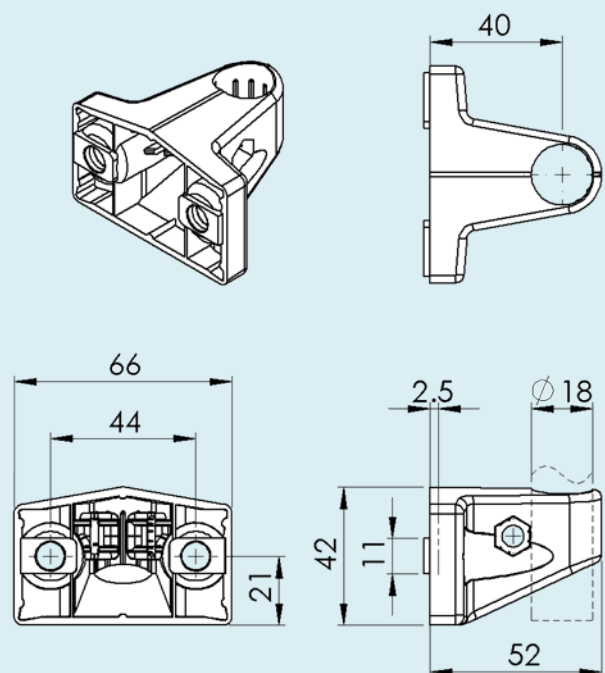
Guide rail bracket support Type VD

FLRF 40X18VD

To be used with vertical 18 mm tube
or rod, or guide rail clamp
FLRL / FLRC 18X110C.

Mounting to beam:

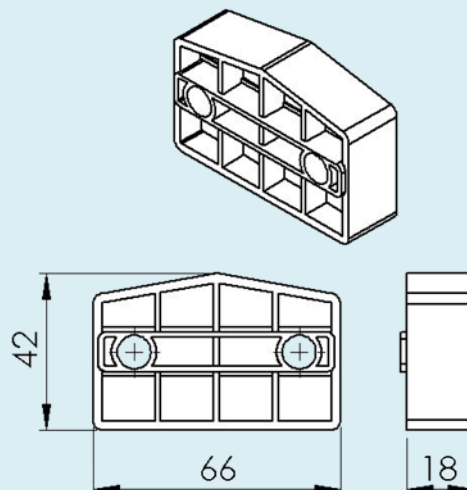
2 each of MC6S 8X14, FLAQ 8,
BRB 8,4X16



Adjustable guide rail brackets, polyamide

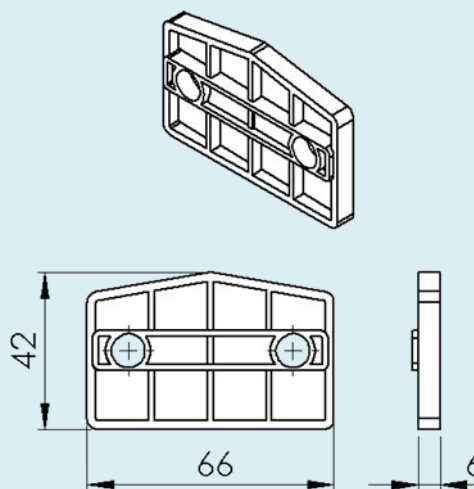
Distance piece for FLRF 40X18VD

FLRD 18VD



Distance piece for FLRF 40X18VD

FLRD 6VD



F45

FT

FS

FL

FLP

F65

FM

FMP

F85

F85P

FH

FK

FKP

FB140

FB175

FB295

SPIRAL

FW

FLX

FMX

FHX

FBX175

FBX295

ACC

CA

FC

TOOL

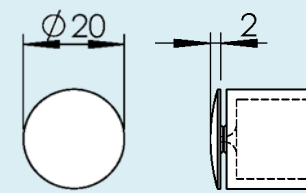
IDX

Adjustable guide rail brackets, polyamide

FLAK 18

Dummy plug

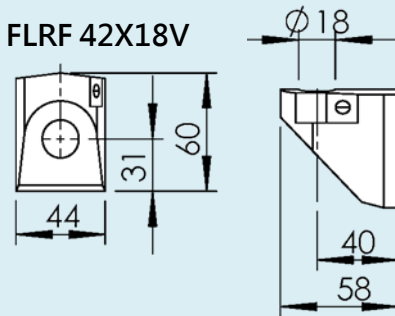
FLAK 18



FLRF 42X18V

Guide rail bracket support
With clamp for 18 mm tube

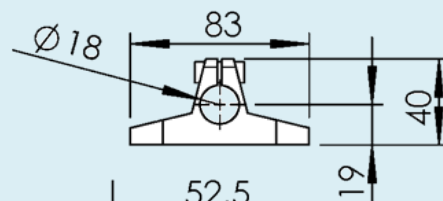
FLRF 42X18V



FLRF 40X18

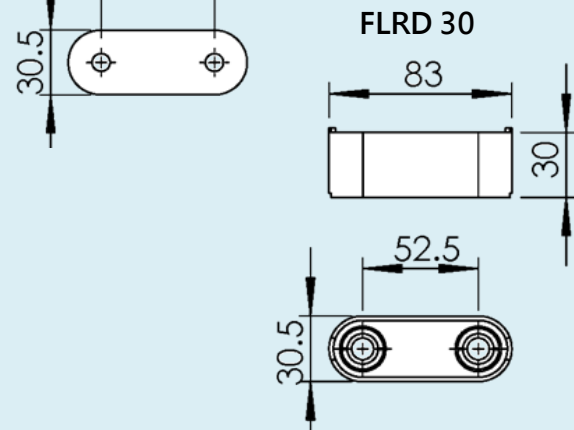
Guide rail bracket support
With clamp for 18 mm tube

FLRF 40X18



FLRD 30

Distance piece for
FLRF 40X18



FLRF 42X18VH

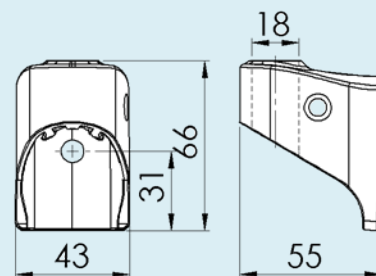
Reinforced Guide rail
bracket support,
material: Zinc

To be used with vertical 18 mm tube
or rod, guide rail clamp
FLRL/FLRC 18X110C, or with quick
release clamp FLRL 18X97CQ.

Mounting to beam: FLAT 17, FLAN 8,
BRB 8.4X16

Use socket wrench with 3/8" drive.
Do not overtighten (max torque: 10 Nm).

FLRF 42X18VH



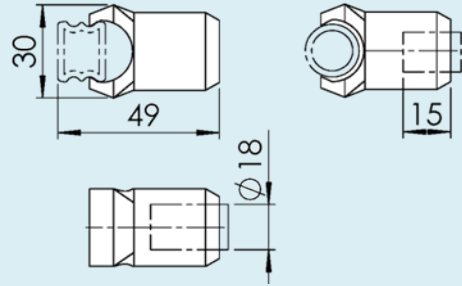
Spacer beam for guide rail bracket support

| | | |
|--|--|---|
| <p>Spacer beam</p> <p>FLRN 3U Beam with flat sides, length 3mt</p> <p>FLRN 3 Beam with T-slots, length 3mt</p> | | <p>F45</p> <p>FT</p> <p>FS</p> <p>FL</p> <p>FLP</p> <p>F65</p> <p>FM</p> <p>FMP</p> <p>F85</p> <p>F85P</p> <p>FH</p> |
| <p>FLRD 3D Spacer beam connector Width 3 mm For use with spacer beam type FLRN 3U</p> | | <p>FK</p> <p>FKP</p> <p>FB140</p> <p>FB175</p> |
| <p>Distance piece Type A</p> <p>FLRD 6A D= 6 mm</p> <p>FLRD 18A D= 18 mm</p> | | <p>FB295</p> <p>SPIRAL</p> <p>FW</p> <p>FLX</p> <p>FMX</p> |
| <p>Guide rail clamp 1</p> <p>FLRK 18X40C L= 40 mm</p> <p>FLRK 18X60C L= 60 mm</p> <p>FLRK 18X80C L= 80 mm</p> | | <p>FHX</p> <p>FBX175</p> <p>FBX295</p> <p>ACC</p> <p>CA</p> |
| <p>Guide rail clamp 2</p> <p>FLRL 18X110C</p> <p>Including screw To be used directly with FLRF 42X18V</p> | | <p>FC</p> <p>TOOL</p> <p>IDX</p> |

Guide rail clamp for double track conveyors

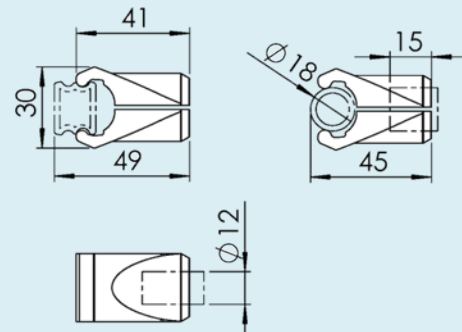
Guide rail clamp 3
FLRK 18CE

Including screw and nut



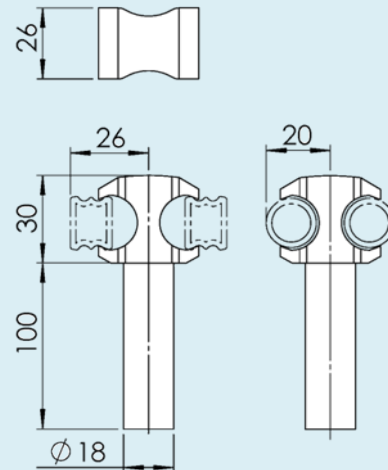
Guide rail clamp 4
FLRK 12CE

Including screw and nut



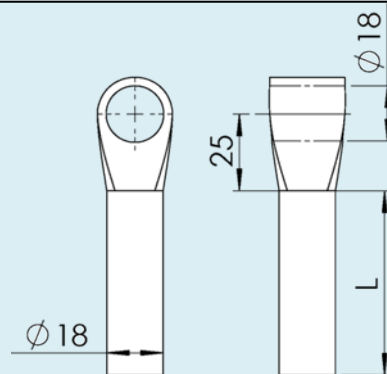
FLRC 18X110C

Guide rail clamp for
 double track conveyors
 Including screw and nut



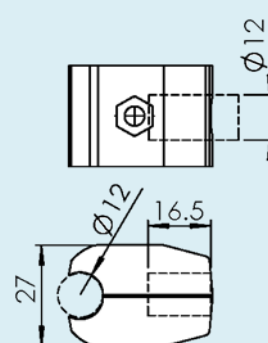
Guide rail clamp supports
 Including screw and nut
 For use with FLRK
 18x40/60/80C

FLRL 18X60CA L= 60 mm
FLRL 18X110CA L= 110 mm
FLRL 18X160CA L= 160 mm

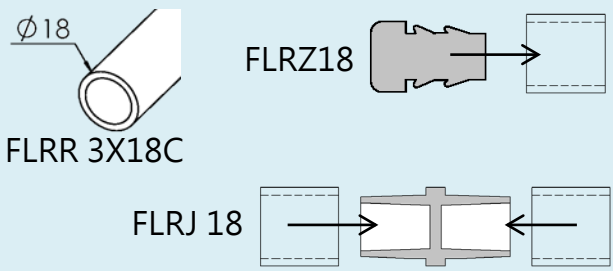
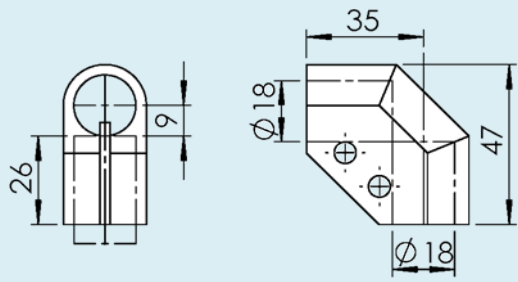
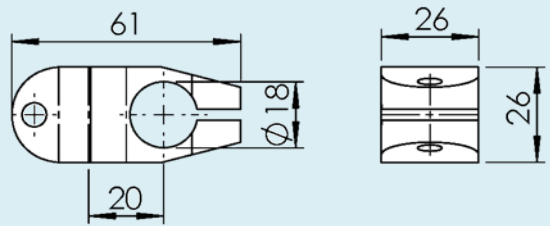
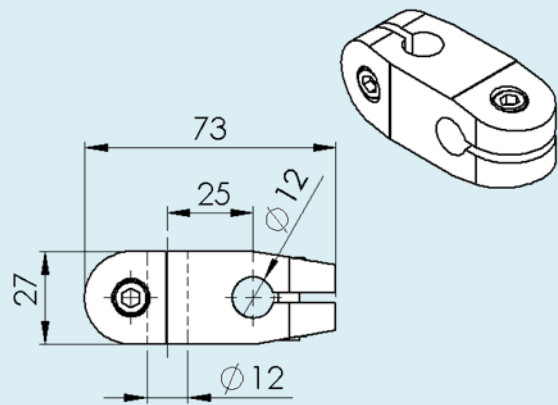
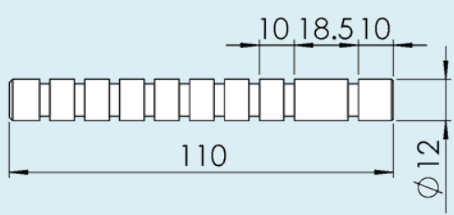


FLRK 12DE

Including screw and nut



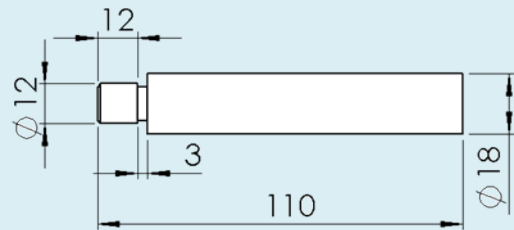
Accessories for guide rail bracket support

| | | |
|--|--|--|
| <p>Guide rail support tube</p> <p>FLRR 3X18C Length 3 mt</p> <p>FLRZ 18 End cap</p> <p>FLRJ 18 Connecting plug</p> |  | <p>F45</p> <p>FT</p> <p>FS</p> <p>FL</p> <p>FLP</p> <p>F65</p> <p>FM</p> |
| <p>FLRX 18C Corner connector Including screws and nuts</p> |  | <p>FMP</p> <p>F85</p> <p>F85P</p> <p>FH</p> <p>FK</p> <p>FKP</p> |
| <p>FLRX 18X Cross connector Including screws nut. Can be used with star knob FLAR 6X20 for easy readjustment</p> |  | <p>FB140</p> <p>FB175</p> <p>FB295</p> <p>SPIRAL</p> <p>FW</p> <p>FLX</p> |
| <p>F5114461 Cross connector Including screws nut.</p> |  | <p>FMX</p> <p>FHX</p> <p>FBX175</p> <p>FBX295</p> <p>ACC</p> <p>CA</p> <p>FC</p> <p>TOOL</p> |
| <p>F5051168 Guide rail clamp rod with groover Stainless steel .For use with guide rail clamps FLRK 12 CE/DE and clamp support FLRL 18x97 CQ</p> |  | <p>IDX</p> |

Accessories for guide rail bracket support

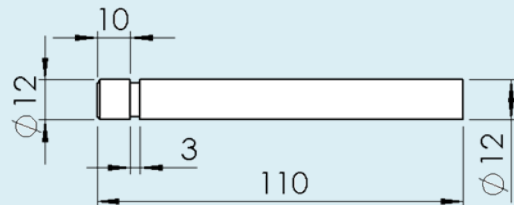
F5049746

Guide rail clamp rod.
Stainless steel .For use with guide rail
clamps FLRK 12CE/DE



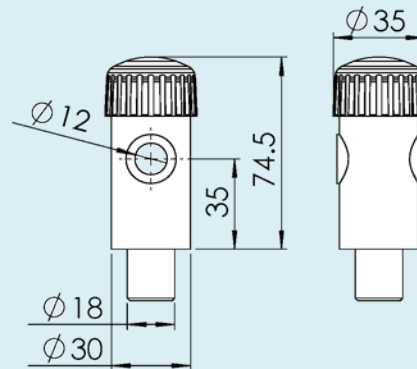
F5050986

Guide rail clamp rod.
Stainless steel .For use with guide rail
clamps FLRK 12CE/DE and clamp
support FLRF 30X71K

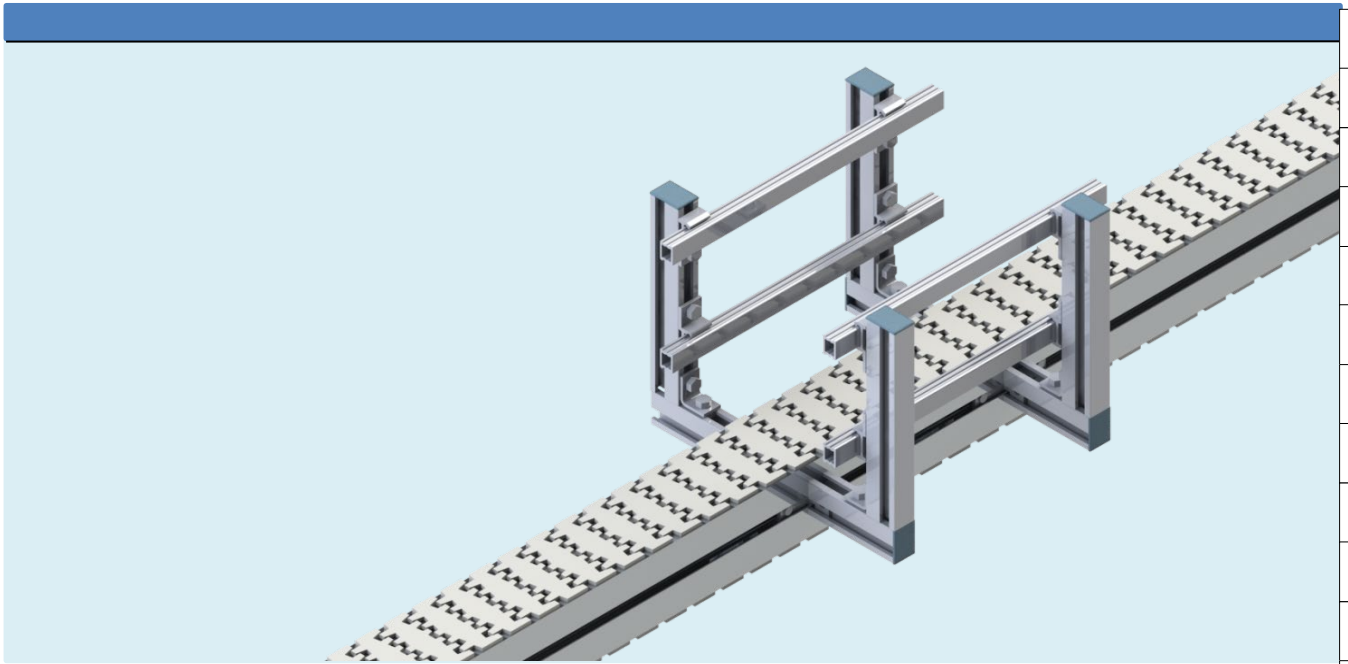


FLRL 18X97CQ

Quick release guide rail clamp support
For use with guide rail bracket support
FLRF 42X18V



Built-up guide rail brackets



F45

FT

FS

FL

FLP

F65

FM

FMP

F85

F85P

FH

FK

FKP

FB140

FB175

FB295

SPIRAL

FW

FLX

FMX

FHX

FBX175

FBX295

ACC

CA

FC

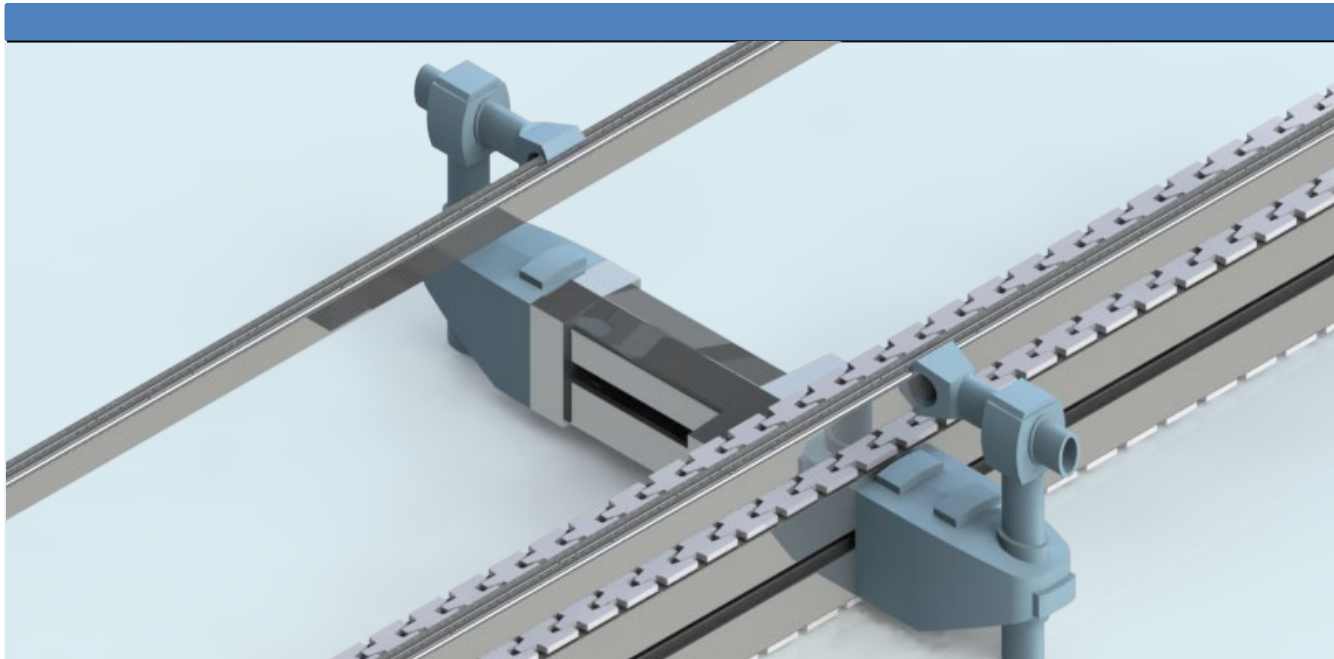
TOOL

IDX

Built-up guide rail brackets

| | | |
|--|--|--|
| <p>FLRC 20</p> <p>Guide rail bracket</p> | | |
| <p>FLRC 20A</p> <p>Guide rail bracket Including M8 screw and square nut</p> | | |
| <p>FMRX 20</p> <p>Inner fitting 90° Including T-bolt, nut, set screw</p> | | |
| <p>FMRY 20</p> <p>Inner fitting 90° Including screws</p> | | |
| <p>FMRW 20</p> <p>Corner fitting 90° Including set screws</p> | | |
| <p>FLAP 28</p> <p>Spring pin for guide rail bracket</p> | | |

Quick Guide



| |
|-----------|
| F45 |
| FT |
| FS |
| FL |
| FLP |
| F65 |
| FM |
| FMP |
| F85 |
| F85P |
| FH |
| FK |
| FKP |
| FB140 |
| FB175 |
| FB295 |
| SPIRAL |
| FW |
| FLX |
| FMX |
| FHX |
| FBX175 |
| FBX295 |
| ACC |
| CA |
| FC |
| TOOL |
| IDX |

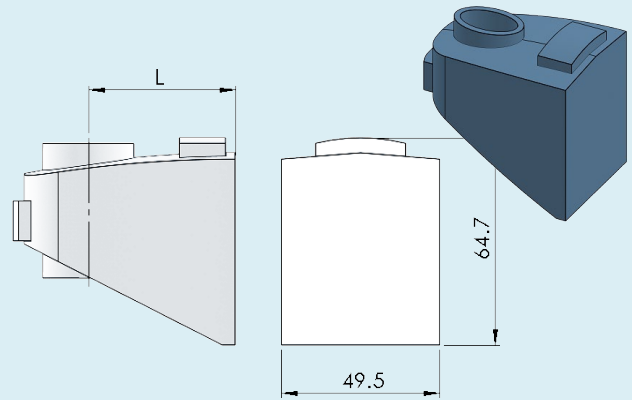
QuickGuide bracket support

Guide rail bracket support

FLRF 46Q L = 46 mm

FLRF 64Q L = 64 mm

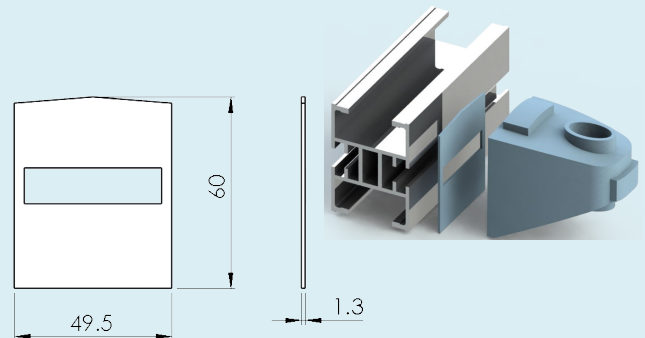
Note:
Adapter plate FLRD OQ is required for mounting of FLRF brackets to system FS, FL, FM and FH.



Adapter plate

FLRD OQ

Note:
Use in combination with the old type of T-slots in conveyor beams (FS, FL, FM and FH)

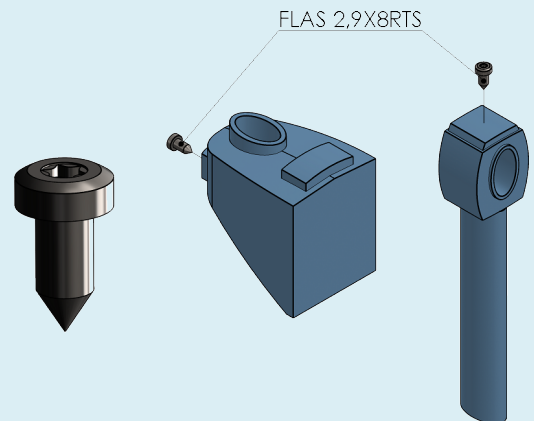


Screw

FLRS 2,9X8RTS Ø2,9 mm

Stop screw for bracket support and clamp support

Note:
Use in combination with the old type of T-slots in conveyor beams (FS, FL, FM and FH)



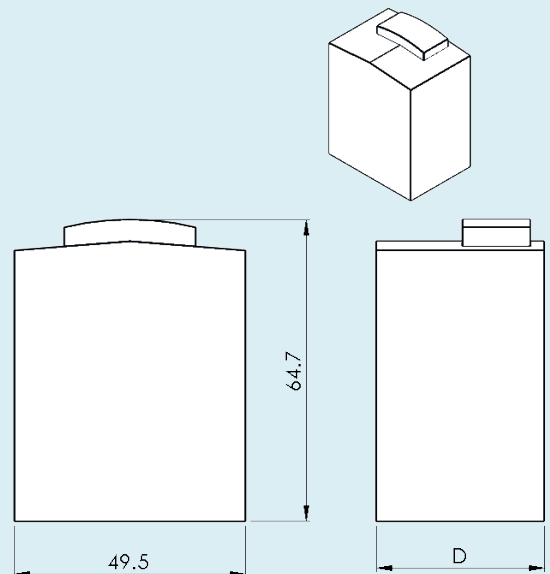
Spacer for guide rail bracket support

FLRD 36Q L = 36 mm

FLRD 72Q L = 72 mm

Distance piece

For use with guide rail bracket supports FLRF 46/64 Q



QuickGuide Spacers

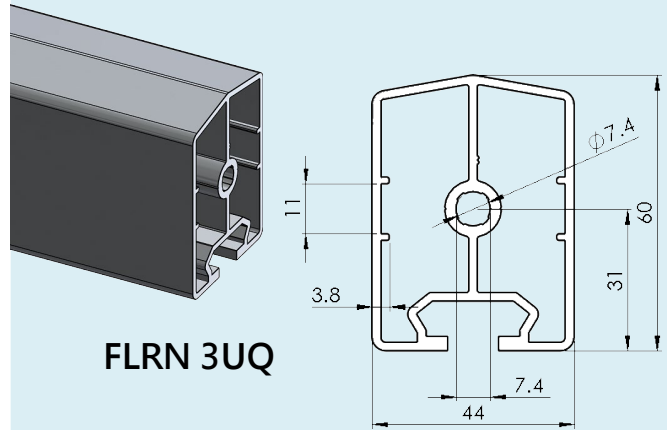
Spacer beam for guide rail bracket support

FLRN 3UQ Beam w/ flat sides
Length 3m

FLRN 3 Beam w/ flat sides
Length 3m

*Please see page CA-17

Note:
For use with guide rail adapter plate
FLRD GQ, end plate FLRD BQ & guide
rail bracket support FLRF 46/64 Q.



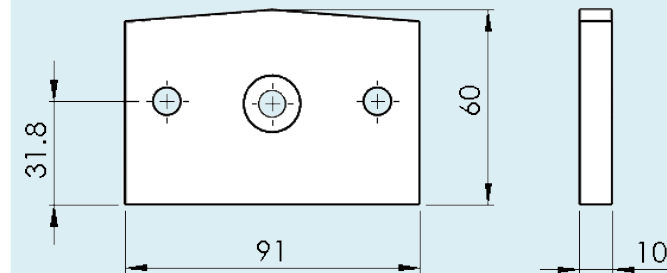
FLRN 3UQ

End plate

FLRD BQ

For use with spacer beam
FLRN 3/ FLRN 3UQ

Mounting:
FCAN 8 (x2), BRB 8,4x16 (x2),
M6S 8x18 (x2), MF6S 8x18 (1x)
(not included)

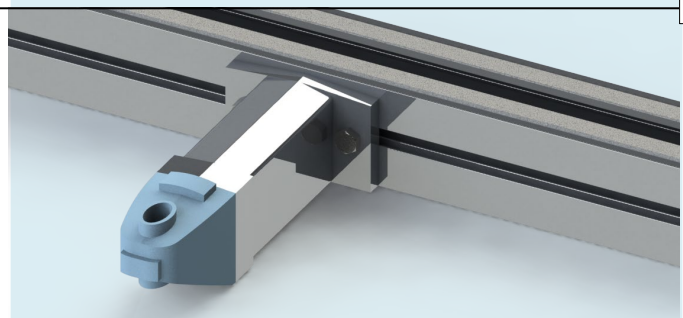
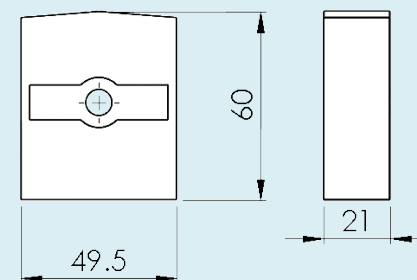


Adapter plate

FLRD GQ

For use with spacer beam
FLRN 3/ FLRN 3UQ

Mounting:
MC6S 8x14 (x1), (not included)



F45

FT

FS

FL

FLP

F65

FM

FMP

F85

F85P

FH

FK

FKP

FB140

FB175

FB295

SPIRAL

FW

FLX

FMX

FHX

FBX175

FBX295

ACC

CA

FC

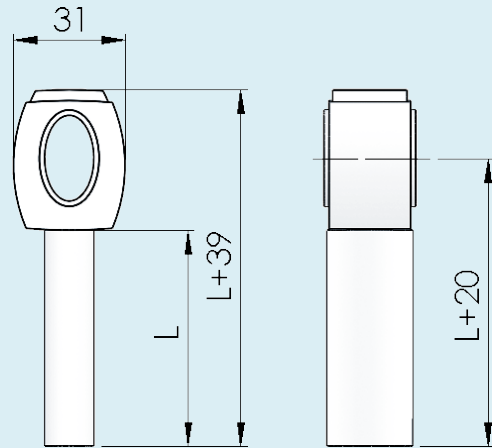
TOOL

IDX

QuickGuide

Guide rail clamp support

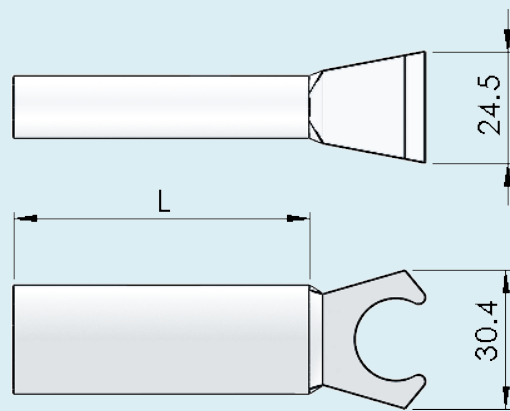
| | |
|------------|------------|
| FLRL 60VQ | L = 60 mm |
| FLRL 110VQ | L = 110 mm |
| FLRL 160VQ | L = 160 mm |



Guide rail clamp support

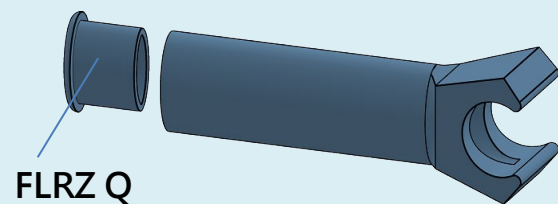
| | |
|-----------|-----------|
| FLRK 45HQ | L = 45 mm |
| FLRK 65HQ | L = 65 mm |
| FLRK 85HQ | L = 85 mm |

*Including screw and nut
For use with guide rail bracket
supports Type 46/64 Q,
guide rail clamp supports Type VQ,*



End cap

FLRZ Q

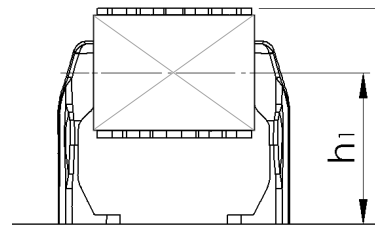


*For use with FLRL 60/110/160 VQ and
FLRK 45/65/85 HQ. Contains 10 pcs.*

Conveyor supports



- F45
- FT
- FS
- FL
- FLP
- F65
- FM
- FMP
- F85
- F85P
- FH
- FK
- FKP
- FB140
- FB175
- FB295
- SPIRAL
- FW
- FLX
- FMX
- FHX
- FBX175
- FBX295
- ACC
- CA
- FC
- TOOL
- IDX

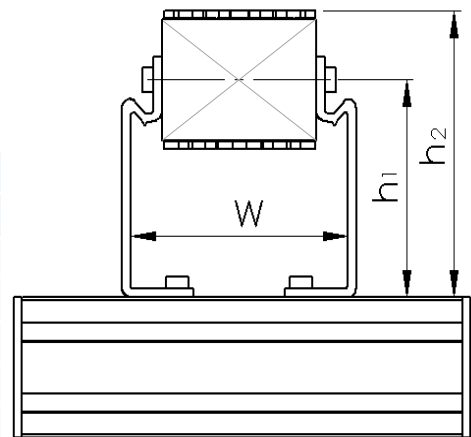


Type CT for crossing support beam 64/88 mm

| Bracket type | Height to top of chain h2 mm | | | | | | | Comments |
|--------------|------------------------------|--------|--------|-----|-----|------|------|----------|
| | FS | FL/F65 | FM/F85 | FH | FK | F180 | F300 | |
| FLCT 11X100C | 137 | 137 | 144 | 144 | 157 | 146 | 146 | h1=100mm |
| FLCT 21X135B | 172 | 172 | 179 | 179 | 192 | 181 | 181 | h1=135mm |
| FLCT 21X158R | 195 | 195 | 202 | 202 | 215 | 204 | 204 | h1=158mm |
| Width : W | | | | | | | | |
| FLCT 11X100C | 67 | 87 | 107 | 127 | 127 | 204 | 322 | |
| FLCT 21X135B | 87 | 107 | 127 | 147 | 147 | 224 | 224 | |
| FLCT 21X158R | 87 | 107 | 127 | 147 | 147 | 224 | 224 | |

Type CT for crossing support beam 64/88 mm

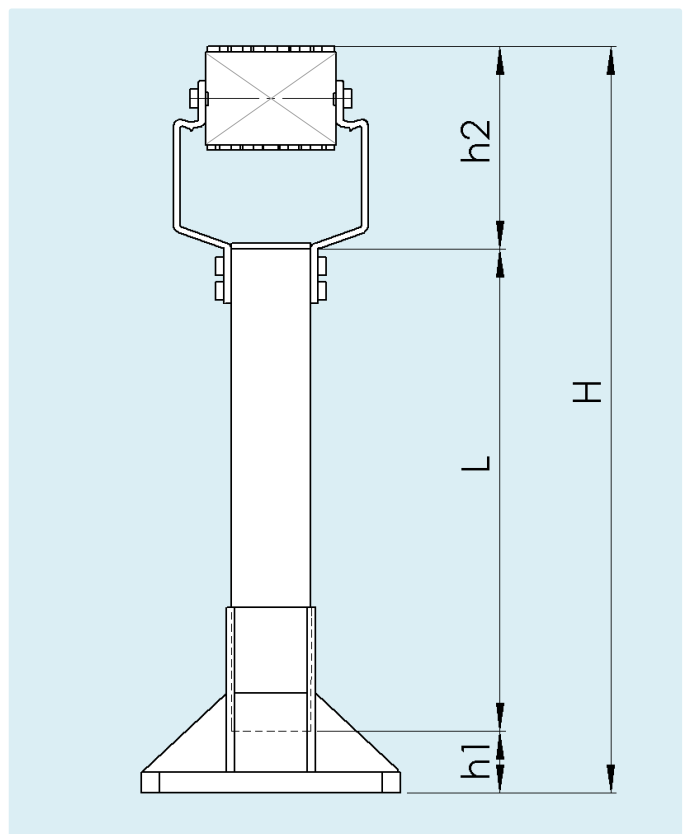
| Bracket type | Height to top of chain h2 mm | | | | Comments |
|--------------|------------------------------|--------|-----|-----|----------|
| | FL/F65 | FM/F85 | FH | FK | |
| FLCT 21X135B | 172 | 179 | 179 | 192 | h1=135mm |
| FLCT 21X158R | 195 | 202 | 202 | 215 | h1=158mm |
| Width : W | | | | | |
| FLCT 21X135B | 107 | 127 | 147 | 147 | |
| FLCT 21X158R | 107 | 127 | 147 | 147 | |



Conveyor supports

$$L = H - h1 - h2$$

| Foot type | h1 mm |
|--------------|-------|
| FCFF 44X130A | 0-30 |
| FCFF 64X210A | 0-40 |
| FCFF 88X260A | 0-50 |



| Beam | Bracket type | h2 mm | | | | |
|-------|--------------|-------|-----|-----|-----|-----|
| | | FS | FL | F85 | FH | FK |
| 44X44 | FSCS 44 | 156 | - | - | - | - |
| | FLCS 44 | - | 156 | - | - | - |
| 64X64 | FSCS 64 | 155 | - | - | - | - |
| | FLCS 64 | - | 155 | - | - | - |
| | FMCS 64C | - | - | 170 | - | - |
| | FHCS 64B | - | - | - | 181 | - |
| 88X88 | FLCS 88 | - | 155 | - | - | - |
| | FMCS 88B | - | - | 181 | - | - |
| | FHCS 88B | - | - | - | 181 | - |
| | FKCS 88R | - | - | - | - | 212 |

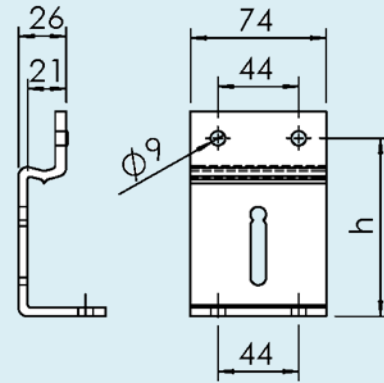
Conveyor beam support brackets-aluminium

Beam support bracket
For 88 mm crossing support beam

FLCT 21X100 h= 100 mm

FLCT 21X125 h= 125 mm

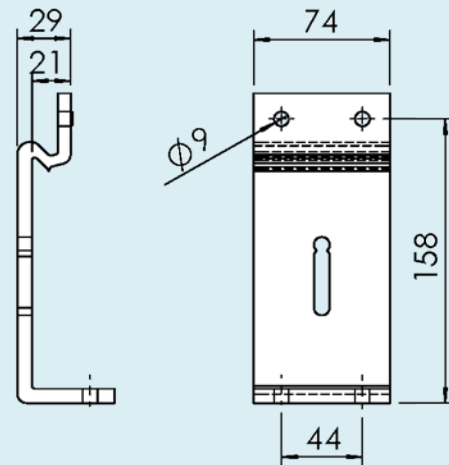
FLCT 21X135 h= 135 mm



Beam support bracket
For 88 mm crossing support beam

FLCT 21X158R*

*Use T-slot screw FLAT 24 with this beam support bracket. (FLAT 17 is too short.)

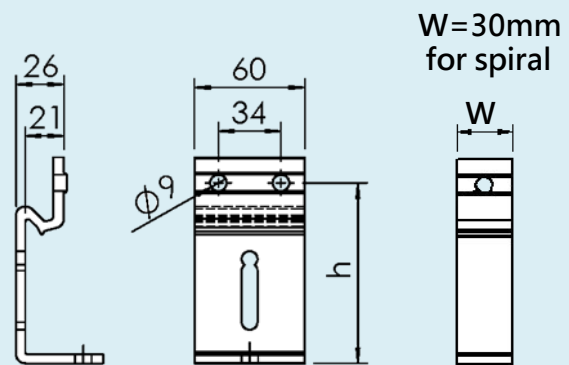


Beam support bracket
For 64 mm crossing support beam

FLCT 21X100A h= 100 mm
FLCT 21X100S h= 100 mm
(W=30mm, for spiral)

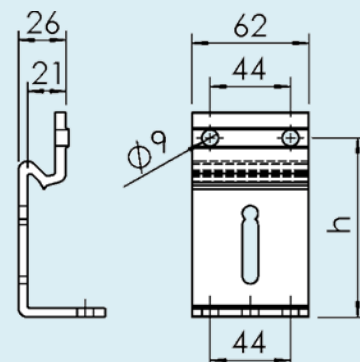
FLCT 21X125A h= 125 mm

FLCT 21X135A h= 135 mm



Beam support bracket

FLCT 21X135B h= 135 mm



F45

FT

FS

FL

FLP

F65

FM

FMP

F85

F85P

FH

FK

FKP

FB140

FB175

FB295

SPIRAL

FW

FLX

FMX

FHX

FBX175

FBX295

ACC

CA

FC

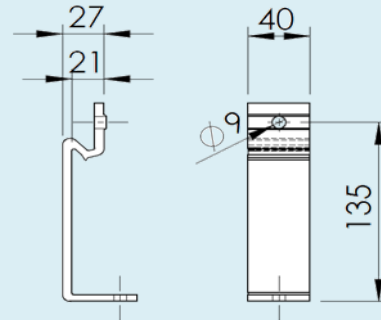
TOOL

IDX

Conveyor beam support brackets-aluminium

Beam support bracket

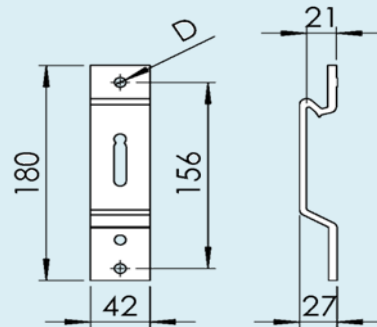
FLCT 21X135C h= 135 mm



Beam support bracket
For 44 mm vertical support beam

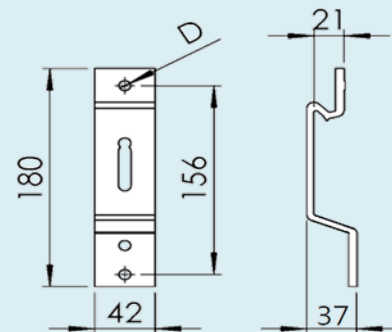
FUCS 44A
For F45 conveyor D= 6.8 mm

FSCS 44
For FS conveyor D= 9 mm



Beam support bracket
For 44 mm vertical support beam

FLCS 44
For FL conveyor D= 9 mm



Beam support bracket
For 64 mm vertical support beam

FSCS 64
For FS conveyor

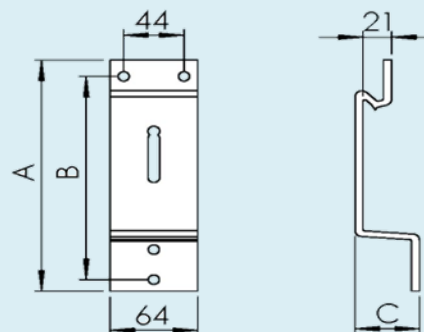
FLCS 64
For FL conveyor

FMCS 64
For FM conveyor

FMCS 64B
For FM conveyor

FHCS 64
For FH conveyor

FHCS 64B
For FH conveyor



| | A | B | C |
|----------|-----|-----|----|
| FSCS 64 | 180 | 156 | 17 |
| FLCS 64 | 180 | 156 | 27 |
| FMCS 64 | 180 | 156 | 37 |
| FMCS 64B | 200 | 176 | 37 |
| FHCS 64 | 180 | 156 | 47 |
| FHCS 64B | 200 | 176 | 47 |

Conveyor beam support brackets-aluminium

Beam support bracket
For 88 mm vertical support beam

FLCS 88
For FL conveyor

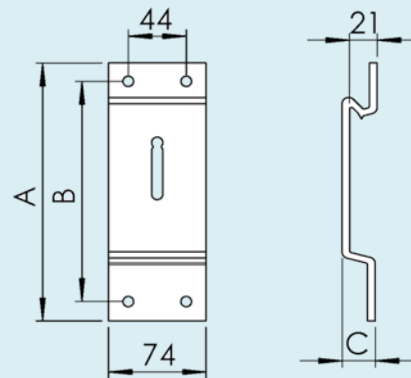
FMCS 88B
For FM conveyor

FKCS 88R*
For FK conveyor

FHCS 88
For FH conveyor

FHCS 88B
For FH conveyor

*Use T-slot screw FLAT 24 with this
Beam support bracker. (FLAT 17 is too
short.)

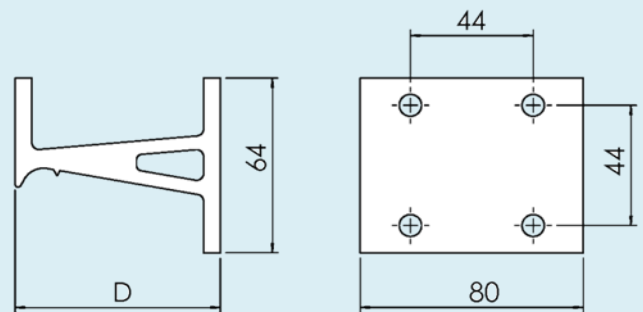


| | A | B | C |
|----------|-----|-----|----|
| FLCS 88 | 180 | 151 | 15 |
| FMCS 88B | 200 | 171 | 25 |
| FKCS 88R | 220 | 190 | 37 |
| FHCS 88 | 180 | 151 | 35 |
| FHCS 88B | 200 | 171 | 35 |

Beam support bracket
For support of 180 ° wheel
bend with 88 mm vertical
support beam

FLCU 73 For conveyor systems
FL, FM, FH, D=73.5 mm

FLCU 103 For conveyor systems
FK, D=103.5 mm



- F45
- FT
- FS
- FL
- FLP
- F65
- FM
- FMP
- F85
- F85P
- FH
- FK
- FKP
- FB140
- FB175
- FB295
- SPIRAL
- FW
- FLX
- FMX
- FHX
- FBX175
- FBX295
- ACC
- CA
- FC
- TOOL
- IDX

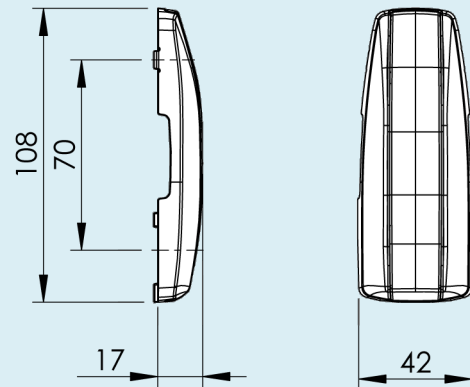
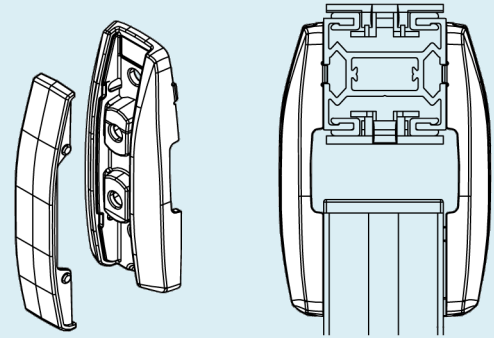
Conveyor beam support brackets-aluminium

Beam support bracket
Aluminium, die-cast

FUCS 44
for 44 mm vertical support beam

Including cap **F5112469(1)**

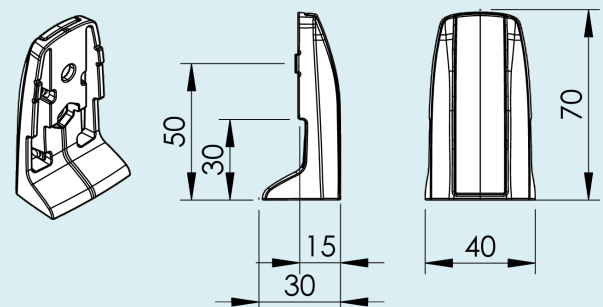
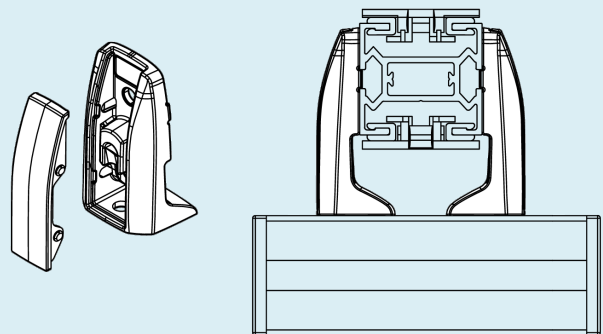
Can be used with cable ducts
With mounting accessories



FUCT 50
For transverse support profiles 44 mm

Including cap **F5112472(1)**

Can be used with cable ducts
With mounting accessories



Conveyor beam support brackets-aluminium

Beam support bracket
Aluminium, die-cast

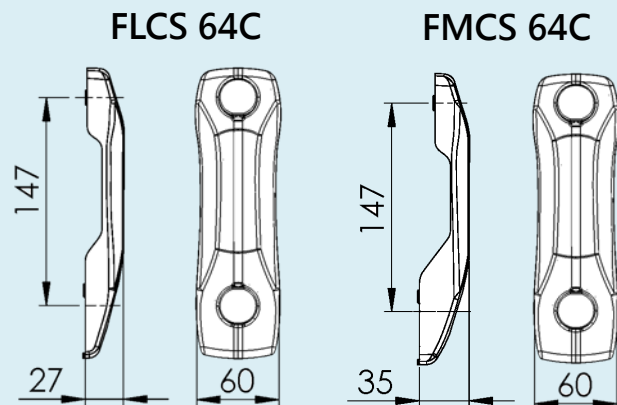
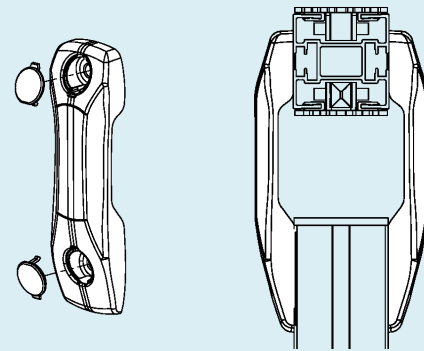
FLCS 64C
for FL, F65 vertical support beam

FMCS 64C
For FM, F85 vertical support beam

Mounting:
FLAT 17 (1), FLAN 8 (1), FCAN 8 (1),
M6S 8X16 (1), BRB 8,4X16 (2)

Order M6S 8X16 screw instead of the
FLAT 17 T-slot screw.
Including cap **F5110134** (2)

Cannot be used with drip trays

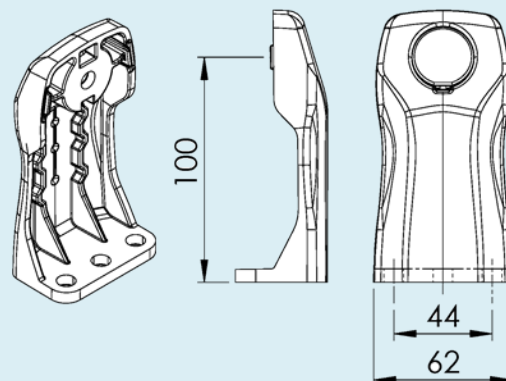
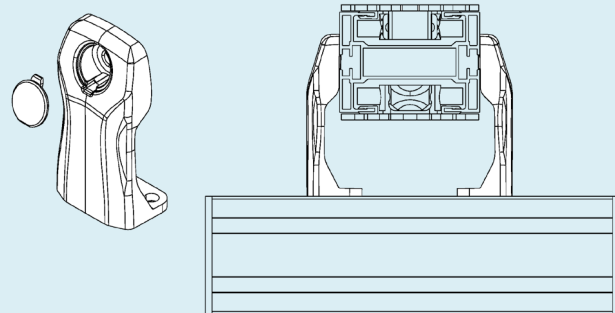


FLCT 11X100C
For 64 mm or 88 mm crossing
support beam.

Mounting:
FLAT 17 (1), FLAN 8 (1), FCAN 8 (1 or 2),
M6S 8X16 (1 or 2), BRB 8,4X16 (2 or 3)

Including cap **F5110134** (1)Cap

Cannot be used with drip trays



F45

FT

FS

FL

FLP

F65

FM

FMP

F85

F85P

FH

FK

FKP

FB140

FB175

FB295

SPIRAL

FW

FLX

FMX

FHX

FBX175

FBX295

ACC

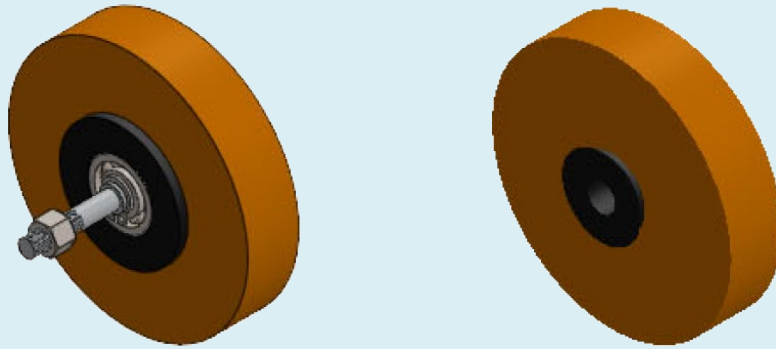
CA

FC

TOOL

IDX

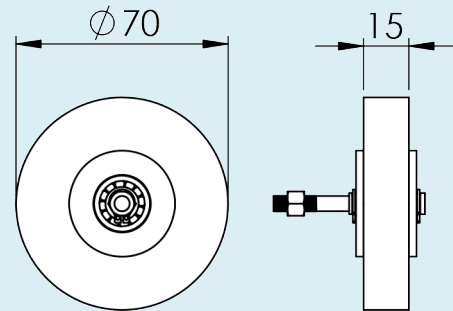
Packet incline unit



Packet incline unit

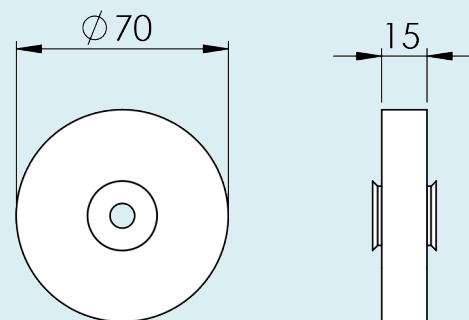
F5111461

Full roller assembly including hub and fixings



F5111461B

Full roller assembly including hub and fixings (without bearing)



F5111472

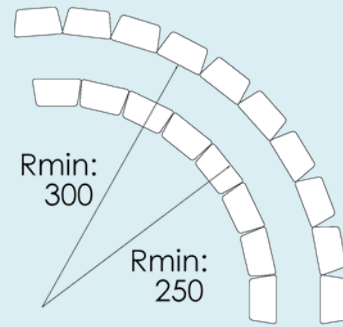
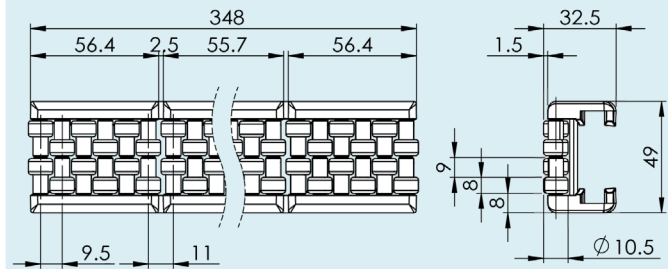
Sponge roller only

Flexible roller module

Flexible roller module

F5050902

Flexible roller module
Length 348 mm

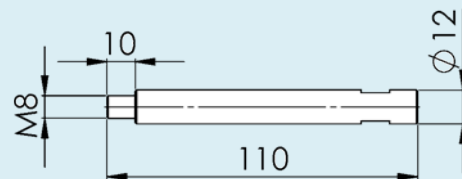


*Mounting to profile F5050889:
SK6SS 4x20*

Rod for roller module profile

F5050887

Rod for roller module profile $\varnothing 12$

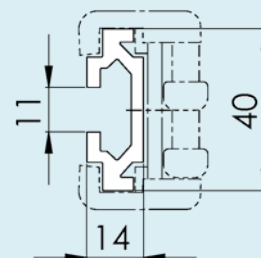


*Mounting to roller module profile
F5050889: FCAN 8, BRB 8.4x16
For use with guide rail bracket
support Type K.*

Roller module profile

Roller module profile
Length 3 mt

F5050889



*For use with roller module F5050902.
Use connecting strip FLCJ 5X140 for
joints.*

F45

FT

FS

FL

FLP

F65

FM

FMP

F85

F85P

FH

FK

FKP

FB140

FB175

FB295

SPIRAL

FW

FLX

FMX

FHX

FBX175

FBX295

ACC

CA

FC

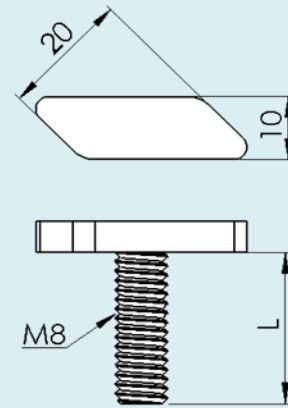
TOOL

IDX

Screws

T-bolts

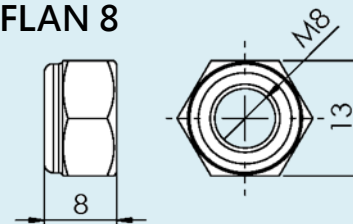
| | |
|----------------|----------|
| FLAT 17 | L= 17 mm |
| FLAT 24 | L= 24 mm |
| FLAT 35 | L= 35 mm |
| FLAT 53 | L= 53 mm |
| FLAT 71 | L= 71 mm |



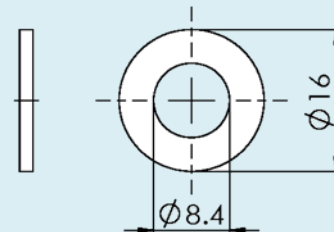
Nut

| | |
|---------------|---|
| FLAN 8 | Locking nut M8 for T-bolt, include washer BRB 8,4X16 |
|---------------|---|

FLAN 8

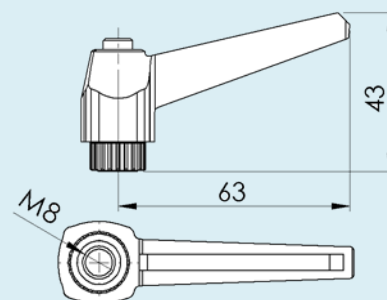


BRB 8,4X16



Locking lever, nut type

| | |
|---------------|------------------------------|
| FLAL 8 | Locking lever with M8 thread |
|---------------|------------------------------|



| | |
|------------------|--|
| FLAL 8X10 | Locking lever with M8 screw, thread length 10 mm |
|------------------|--|

